

32 ft 2017 Beneteau Swift Trawler 30, Shepherd

US\$259,000

Colchester, Vermont, United States

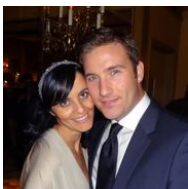
SCHWARTZ & CO.

YACHT SALES



Boat Details

Make:	Beneteau	Class:	Trawler	Heads:	1
Model:	Swift Trawler 30	Hull Material:	Fiberglass	Fuel Type:	Diesel
Year:	2017	Drive Type:	Direct Drive		
Length:	32 ft 11 in	Beam:	11 ft 7 in		
Price:	US\$259,000	Boat Location:	Colchester, Vermont, United States		
Condition:	Used	Name:	Shepherd		



Michael Schwartz | Schwartz & Co. Yacht Sales

1009 Wexford Drive, Westmont, Illinois, United States

Tel: **312-533-9111**

michael@schwartzco.net

<https://www.schwartzyachts.com>

Description

New listing. super clean and well maintained 30 Swift Trawler. Excellent condition. Needs nothing, completely turn key for next owner. Powered with single Volvo D6 inboard diesel (507 hours). In water now, will be hauled for outdoor storage soon.

Key Standard Features:

Bow Thruster
Electric Anchor Windlass with control at helm
Opening transom
Hot and cold pressure shower in cockpit
Hull side door to starboard
Galley up layout with refrigerator, stainless steel sink
Starboard settee with jump seats and conversion to double bed
Dinette table
Sliding door access from helm
Double helm seat with hinged lumbar support for standing
Fold-down helm platform for added height
Double centerline berth in owners cabin with marine mattress
Head to starboard with electric Quiet Flush toilet, vanity sink
Separate very large stall shower to port
Inverter
Battery charger
Electric trim tabs
Fresh water dock inlet
Hot and cold pressure water and water heater
Flybridge with controls and electronics and seats and table
White hull

Factory Installed Options:

Bow thruster
Nuance White upholstery in Salon
Trim Level Essential with extra fridge in galley, Raymarine E 95 at lower helm replaced by E 128, 2 extra jump seats integrated into the starboard settee
Mooring anchoring kit
Two foldable jump seats on transom doors in cockpit - Storm gray
Telescopic dinghy davits
Flybridge Bimini
Extended Swim platform
Black exterior wheelhouse curtains
Generator 7.5 kw
Deck search light with remote control at helm stations
Microwave oven
Reverse cycle air conditioning - heat system 24,000 btu
DVD player and Soundbar in Salon
Aft camera video link to helm MFD's

Raymarine E125 larger MFD for Flybridge replaces E95

Solid wood slatted cockpit floor and starboard catwalk and extended swim platform

Custom bedding package with berth coverlet and two pillow cases

Recent Upgrades:

New TV

Reverso oil changing system to engine, generator and transmission.

Two new isolation transformers

Information & Features

2017 Volvo Penta D6 (Engine 1)

Type:	Inboard	Drive Type:	Direct Drive
Fuel Type:	Diesel	Power:	370 hp
Hours:	507		

Dimensions

LOA:	32 ft 9 in
Beam:	11 ft 7 in

Weights

Dry Weight:	13,224 lb
-------------	------------------

Seating

Max Passengers:	8
-----------------	----------

Tanks

Fuel:	1 x 185 gal
Fresh Water:	2 x 40 gal

Accommodations

Heads:	1
--------	----------

Electrical Equipment

- Shore Power Inlet
- Generator

Electronics

- Depthsounder
- Log-Speedometer
- TV Set
- Navigation Center
- Plotter
- Autopilot
- Radio
- Compass
- GPS
- Cockpit Speakers
- VHF

Inside Equipment

- Electric Bilge Pump
- Manual Bilge Pump
- Marine Head
- Air Conditioning
- Electric Head
- Heating
- Hot Water
- Refrigerator
- Battery Charger

Manufacturer Provided Description

The most recent member of the 'long-distance cruiser' family, the Swift Trawler 30 is an excellent balance between style and seaworthiness. The smallest of the Swift Trawlers is a liveaboard boat. She has many innovations and beats records when it comes to autonomy.

Hull

- Composition: Sandwich (Polyester resin - Glass fibre / Balsa core)
- White gel-coat
- Structural hull counter moulding in monolithic laminate (Polyester resin - Glass fibre)
- Profile: Semi-floating hull
- Stainless steel guard sheer rail on hull

Deck

- Composition: Sandwich (Polyester resin - Glass fibre / Balsa core)
- White gel-coat
- Diamond tip type non-slip covering
- Structural counter moulding in monolithic laminate

DECK EQUIPMENT

- Gangway door to starboard

MOORING -ANCHORING

- Stainless steel bow fitting
- Stainless steel bow roller and swing
- 6 Mooring cleats (L 300mm)
- Stainless steel gunwale guards
- 1 Mooring locker with self-bailer
- Hood cover

Cockpit

- Self-bailing cockpit
- 1 Locker in cockpit bottom gas piston assisted and lockable
- Gas cylinder locker
- Hot/cold water cockpit shower hose
- Cockpit gate in transom
- Plain solid wood decked swim platform
- 1 Stainless steel swimming ladder, in position
- 1 Access door to catwalk from cockpit with grey-tinted porthole

Accommodations

- Alpi Mahogany interior wood
- Milano oak laminated floors

SALOON

- Headroom: 1,95 m / 6'5"
- Bench convertible into a double bed with 3 drawers (optional extras: 2 pouffes)
- Removable saloon table
- Side windows, opening, in grey tinted glass (black lacquered aluminium frame)
- Storage cupboards
- 3 leaved aft window door with black lacquered aluminium frame
- Antenna pre-wiring with twin socket (digital or satellite)

GALLEY

- Headroom: 1,95 m / 6'5"
- L-shaped galley - Includes:
- Worktop in compact Luna Anthracite
- 2 Stainless steel sinks with cold/hot water mixer taps under pressure
- 2 hob cooker and gas oven (without Grill)
- Front opening refrigerator (Supply 220 V / 12 V)
- Cutlery drawer
- Storage
- Bin (Location)

OWNER'S CABIN (FORWARD)

- Headroom: 1,95 m / 6'5"
- Double berth (1,99 x 1,52 m / 6'6" x 4'12")
- Marine mattress
- 2 Closets, one with shelves
- Large storage space under berths
- 1 Opening hatch with blackout blind
- 2 Opening hull portholes with blackout blind

STARBOARD HEADROOM (2 cabins layout)

- Headroom: 1,95 m / 6'5"
- Polyester shower room
- Mirror
- Upper cupboard (with socket)
- Base cabinet
- 2 Opening portholes
- Quiet flush electric toilet
- Washbasin
- Mixer tap

- Shower mixer tap with shower support
- Protection curtains

STARBOARD HEADROOM (1 cabin version)

- Headroom: 1,95 m / 6'5"
- Polyester shower room
- Mirror
- Upper cupboard (with socket)
- Base cabinet
- 2 Opening portholes
- Quiet flush electric toilet
- Washbasin
- Mixer tap

PORT HEADROOM (1 cabin version)

- Polyester shower room with teak seat
- 2 Hull portholes with blackout curtains
- Shower mixer tap with shower support
- Access trapdoor in stowage space
- Protection curtains

GUEST CABIN (2 cabins layout)

- Headroom: 1,95 m / 6'5"
- Bunk beds (1,85 x 0,58 m / 6'1" x 1'11")
- Marine mattress
- Base cabinet
- Storage under berth
- 2 Opening portholes

Engine

- Shaft line propulsion
- Four blade propeller
- Single engine Cummins QSB5.9I - 425 HP (313 Kw)
- Fuel filter with decanter
- Sea water filter
- Engine room soundproofed with high density foam 40mm thick
- Air intakes for engine hold cooling, on deck
- Extinguisher
- Fuel tank deck filler Stainless steel
- Aluminium fuel tank(s) (Capacity 800 l)
- Steering system: Hung rudder, in stainless steel
- Hydraulic steering
- Electric trim tabs

Electrical

- Electrical panel 12 V / 220 V
- Shore power socket 220 V
- 2 Engine batteries 12 V 50 Ah
- 1 Service battery 12 V 140
- Battery charger
- 2 Sockets 12 V
- Interior lighting (Overhead lights, reading lights)
- Outside lighting (Navigation lights, Mooring light, Spot cockpit)

Flybridge

- Flybridge self-bailing
- Stainless steel access ladder to flybridge with plain solid wood steps and handrails stainless steel
- polyester trap door with gas piston
- Grey tinted windscreen in PMMA
- Stainless steel pulpit surrounding aft of flybridge
- Mast, Navigation light mounting, Radar, Aerials and deck spotlight
- Pilot console with control panel including: Electric engine controls*, Electric windlass control, Thruster* and Flaps
- Fuel gauge indicator
- Tiller angle indicator
- Space for navigation electronics
- Steering wheel Stainless steel
- Steering compass
- Hydraulic steering
- Fog horn
- Socket 12 V
- 1 Adjustable pilot seat
- flybridge saloon to port consisting of L-shaped bench seat with fitted storage space and removable plain solid wood table - (Cushions ??Columbia??)

Disclaimer

The Company offers the details of this vessel in good faith but cannot guarantee or warrant the accuracy of this information nor warrant the condition of the vessel. A buyer should instruct his agents, or his surveyors, to investigate such details as the buyer desires validated. This vessel is offered subject to prior sale, price change, or withdrawal without notice.











