

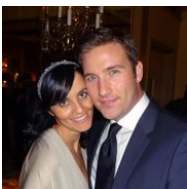
44 ft 2017 Kadey-Krogen 44 AE, Knot Counting  
**US\$1,149,000**  
 Oriental, North Carolina, United States

**SCHWARTZ & CO.**  
 YACHT SALES



**Boat Details**

Make:	<b>Kadey-Krogen</b>	Class:	<b>Trawler</b>	Heads:	<b>2</b>
Model:	<b>44 AE</b>	Hull Material:	<b>Fiberglass</b>	Fuel Type:	<b>Diesel</b>
Year:	<b>2017</b>	Drive Type:	<b>Direct Drive</b>	Max Speed:	<b>9 kn</b>
Length:	<b>44 ft</b>	Beam:	<b>16 ft 4 in</b>	Max Draft:	<b>4 ft 6 in</b>
Price:	<b>US\$1,149,000</b>	Boat Location:	<b>Oriental, North Carolina, United States</b>		
Condition:	<b>Used</b>	Name:	<b>Knot Counting</b>		



**Michael Schwartz | Schwartz & Co. Yacht Sales**  
 1009 Wexford Drive, Westmont, Illinois, United States  
 Tel: **312-533-9111**  
 michael@schwartzco.net  
<https://www.schwartzyachts.com>

## Description

Knot Counting is a beautiful example of the newly designed Krogen 44' AE Widebody. The Advanced Ergonomic 44' has new features including an expanded galley, real steps with bannister to the pilothouse, bright & efficient LED lighting, improved access to the engine room, molded steps to the redesigned flybridge and full walk-through cockpit doors among others. These upgrades make her a truly exceptional yacht for any journey that may be ahead of you. If you are looking for a turn key, like new Krogen 44' AE, Knot Counting is the boat for you. She is ready to head back to the islands or to take you anywhere in the world your heart desires. She shows like a new boat and without the wait of ordering one!

## Information & Features

### John Deere 4045AFM85 (Engine 1)

Type:	<b>Inboard</b>	Drive Type:	<b>Direct Drive</b>	Propeller Material:	<b>Bronze</b>
Fuel Type:	<b>Diesel</b>	Power:	<b>160 hp</b>		
Hours:	<b>1780</b>	Propeller Type:	<b>4 Blade</b>		

### Dimensions

LOA:	<b>49 ft</b>	Beam:	<b>16 ft 4 in</b>
Length On Deck:	<b>44 ft 4 in</b>	Max Bridge Clearance:	<b>13 ft 8 in</b>
LWL:	<b>40 ft 11 in</b>	Max Draft:	<b>4 ft 6 in</b>

### Weights

Ballast:	<b>2,500 lb</b>
Displacement:	<b>43,140 lb</b>

### Speed

Cruising Speed:	<b>8 kn</b>
Max Speed:	<b>9 kn</b>
Range:	<b>3000 nmi</b>

### Tanks

Fuel:	<b>850 gal Aluminum</b>
Fresh Water:	<b>300 gal Stainless Steel</b>
Holding:	<b>52 gal Plastic</b>

### Accommodations

Heads:	<b>2</b>
--------	----------

### Other

Hull Shape:	<b>Displacement</b>
-------------	---------------------

## Construction

Hull and superstructure molds from high-grade female tooling.

Hull construction includes use of USA-made Cook® gel coat. Hand-laid Kytex® fiberglass construction with closed-cell PVC sandwich core used in topsides. Solid fiberglass below waterline with blister-resistant vinyl ester resin utilized on first two laminates below waterline. Impact resistant aramid/FRP reinforced stem and stern bottom areas. This is the same type of material that is known as Kevlar under a different brand. The massive stringer system utilized by Krogen provides high strength but at a lower weight.

Superstructure includes Coracell closed cell foam core and Kytex® surface mats for print-through reduction.

Teak aft and side decks. Boat and fore decks have GripTex® non-skid finish. Bulwark has molded plank lines with gel coat finish.

Polyurethane formulate marine secants used at hull-to-deck, boat deck and exterior fittings.

Marine-grade fiberglass covered plywood bulkheads with molded fiberglass hat section stringers.

## Saloon

The bright and airy saloon is entered through two weather tight welded aluminum doors with windows from the fully covered aft deck. To starboard is a large L-shaped settee with custom Ultraleather fabric and a custom Release Marine cherry fold out dining/coffee table with a beautiful inlaid top and hi-low base. To port are two comfortable Ekornes leather recliners with matching foot stools and a side table. There are large opening windows to port and starboard and an opening window in the aft bulkhead all with screens, teak valances and custom curtains and shades. The saloon has stereo speakers installed in the overhead. The cherry and spruce flooring adds a modern yet nautical touch. For entertainment there is a 48" Samsung TV on a retractable Aritex electric lift so TV is hidden when down. It is on the starboard side so perfect viewing from the comfortable Ekornes chairs.

For access to the engine room there are multiple hatches in the saloon floor. Day to day access for the engine room though is through the lift up stairs to the stateroom companionway. This AE upgrade was a welcome improvement to provide more comfortable and convenient access to the engine room.

## Galley

The open faced U-shaped galley is forward of the saloon on the starboard side. It's ergonomic arrangement makes it a pleasure to use and is fit for a professional chef. There is ample storage in multiple cabinets and drawers. There is a screened opening port above the stove providing extra light and excellent ventilation while cooking. The AE model upgrades have enlarged the space to provide for the professional Bluestar stove as well as the huge 19 cu ft refrigerator.

Major components include:

- Bluestar 4 burner propane stove and oven/convection oven
- Stainless steel GE 19 cu ft refrigerator/freezer
- Stainless steel GE microwave/convection oven w/ vented exhaust
- Large single stainless steel sink
- Grohe faucet w/ pull out head
- Seagull water filtration system
- Cambria counter tops

To port of the galley is a cherry buffet and bar with liquor cabinet as well as cherry book shelves and cabinets containing:

- Splendide combo washer and vented dryer
- Raritan Icerette ice maker

## Master Stateroom

The large master stateroom is located forward. It features an island queen bed, lighted mirror dresser, drawer storage and his-and-her hanging lockers. Custom HMC innerspring mattress was new in 2021. Four screened opening ports with custom shades and an opening hatch w/ Oceanaire screen and shade above the bed provide natural light and ventilation. There is an additional large storage compartment under the bed accessed with a hydraulic lift.

She also has the very popular 1/2 bath in the master stateroom on the port side. It features a Cambria topped counter and Dometic Masterflush freshwater toilet and it's own opening port hole.

## Head

The main head is on the port side opposite the guest stateroom/office in the companionway. There is a large molded shower stall with seat and a glass door. There are two opening stainless port holes, one in the shower. There is a Dometic Masterflush freshwater toilet, mirrored medicine cabinet, linen locker and Cambria topped vanity.

## Guest Stateroom

To starboard is the guest stateroom with settee, bookcases and a side table. The layout is a custom design providing two twin berths. The settee becomes one, and above, at a 90 degree angle, is the top bunk. The top bunk is accessed by cherry steps up. There is drawer storage under the lower bunk and locker/drawer storage under the top bunk. Additionally, there is a large hanging locker in the cabin. Two screened opening ports provide natural light and ventilation for a very bright, open and airy feeling.

## Pilothouse

The pilothouse is a short walk up from the saloon on a full-size staircase complete with banister. There are built-in storage compartments in the steps as well as a book shelf over the steps. Welded aluminum Dutch doors to port and starboard can be dogged-down in inclement weather to create a watertight seal. The Ultraleather watch berth converts to a double bed for extra guests. A custom Release Marine cherry high-low table provides the perfect work space for a laptop and who wouldn't want an office with a view? A Liebrock helm chair with flip up bolster affords the captain comfort under way. There are multiple cabinets and compartments providing storage as well as storage in the steps up to the watch berth. Two overhead opening hatches with Oceanaire screen and shade provide great ventilation while underway or on the hook.

Outside and aft of the port pilothouse door is a molded staircase for easy access to the fly bridge.

## Electronics

- (2) Garmin 7616 15.4" touchscreen plotters in pilothouse
- Garmin 7612 12.1" touchscreen plotter on flybridge
- Garmin software updated in 2021 to include new Bluechart G3 charts
- Garmin 24" 4KW 48 mile dome radar
- Garmin 1 KW sounder w/ bronze Tri-Ducer
- Garmin GHP-20 Autopilot w/ Shadow Drive & second station on flybridge
- Garmin GHC wireless autopilot control
- Garmin AIS- 600 Class B send and receive AIS system
- Garmin GMX-52 SIRIUS Marine Weather receiver
- Garmin GMI-20 Color multifunction display w/ bronze depth, speed & temp "Smart Transducer", Second GMI-20 on flybridge
- ICOM IC-M506 VHF w/ 20W hailer (pilot house and fly bridge)
- ICOM Commandmic IV remote mic (pilot house and fly bridge)
- Airmar 220WX weather station instrument (2021)
- Shakespeare Super-HALO Cellular amplifier
- Actisense W2K-1 NEMA 2000 WIFI gateway (2021)
- Cisco MAX-STREAM AC1900 WIFI router
- Parsec "Husky" 7 in 1 WIFI & cellular mast mounted antenna (2021)
- Pepwave Max Transit WIFI & cellular modem/router (2021)
- Sealand Tank Manager w/ key control
- Ultra Safety System high water bilge alarm
- Ritchie compass at both pilothouse and flybridge helms
- Rudder angle indicators at both pilothouse and flybridge helms
- (4) IRIS-065 Wide angle IR Illuminated ball cameras
- Shakespeare SeaWatch 3019 over the air digital TV antenna (2023)
- Samsung 48" LCD TV in saloon
- Fusion UD-750 Marine stereo w/ 2.7" color display w/ remotes in pilothouse and on flybridge
- Fusion speakers in saloon, pilothouse, aft deck & flybridge
- ACR GlobalFix EPIRB (2021)

## Electrical

- 9KW Northern Lights generator (1600 hours) with sound shield
- Lifeline GPL-2400T AGM generator start battery (2021)
- Generator stainless steel wet exhaust elbow (2023)
- 50 Amp shore power inlet forward and aft w/ SmartPlug and a 50' cable
- 30 Amp shore power inlet aft for light loads w/ SmartPlug and a 50' cable
- Lifeline GPL-8DL AGM batteries (4) in fitted fiberglass boxes (2022)
- Breaker panels are all blue backlit labels w/ indicator lights
- Digital volt and amp displays
- Lexan doors for breaker panels to make it easy to see breaker indicator lights
- Magnum inverter/charger
- Charles isolation transformer
- Charles 40 amp battery charger
- BEP Remote battery control panel & battery switches in saloon
- House to engine start battery parallel switch
- (3) 16,000BTU CruisAir Reverse Cycle Air conditioning systems with SMTXht controls and equipped with soft start compressor controls
- Bright efficient LED lighting throughout including nav lights
- Exterior overhead LED lights are blue/white switchable
- Certain interior LED lights are red/white switchable

## Engine Room/Machinery

- John Deere 4045AFM85 Tier III 160 hp diesel (1780 hours)
- ZF Marine electronic throttle & transmission controls
- Custom DeAngelo stainless steel exhaust riser/elbow hard coat insulated (2022)
- Dual Racor fuel filters w/ vacuum gauge and individual drain spigots
- Dual Racor fuel filters w/ vacuum gauge for generator
- ESI CFS1000FR fuel polishing system
- Reverso oil change system for engine, gear and generator
- ABT hydraulic 15hp bow thruster (serviced w/ new seals in 2022)
- ABT hydraulic 15hp stern thruster (serviced w/ new seals in 2022)
- ABT digital hydraulic stabilizers (complete service, seals & actuator replacement in 2022)
- Maxwell VWC 2500 lb hydraulic windlass with chain wildcat and single rope gypsy, dual chain stoppers & controls on deck & at pilothouse and flybridge helms
- Tides dripless stuffing box
- Emergency bilge pump tied into raw water intake for main engine
- Sea Fire FD-1150M engine room fire system w/ manual pull cable
- Engine room ventilation system utilizing intake and exhaust axial fans with moisture eliminators capable of moving 1500 cu.ft. of air per minute
- Easy access to engine room from lift up steps down from galley or large hatches in saloon floor
- Numerous spares to include HVAC raw water pumps, fresh water pump, engine raw water pump and routine maintenance parts and filters



## Additional Components

- 2016 Capelli 11' RIB
- Yamaha 25 HP outboard
- Twin Pompanette flybridge helm chairs
- Fiberglass flybridge table
- Magma Catalina propane grill (2021)
- Full walk-through cockpit doors
- Isotherm Model 30 safe
- Wired and plumbed for future water maker install
- Warn 1200 lb hoists for boom and lift
- Dyneema boom and hoist lines replaced in 2022
- Block & tackle rigging to control boom swing (2022)
- Block & tackle rigging to lower mast (2023)
- Rocna Vulcan model 33 73lb anchor
- Bow eye and bridle for reducing scope when anchoring
- Fortress FX-55 spare anchor
- Trident propane locker with 2 aluminum 20 lb propane tanks
- Aft door hide-a-way screen
- Textilene screens for pilothouse windows (2022)
- Textilene screens for aft deck shade (2022)
- Custom Sunbrella canvas and cushions for fly bridge and foredeck seating, hatches and helm (2022)
- Dive/swim ladder
- Stainless stern staples to aid getting in and out of dinghy

## Exclusions

Personal effects, art work and tools.

## Disclaimer

Potential purchasers should assume that any items on the vessel at the time of viewing, but not specifically listed on this specification sheet, are not included with the sale of the yacht. These specifications are believed to be correct but cannot be guaranteed. Data was obtained from sources believed reliable but is not guaranteed by owner or brokers. Engine hours are approximate, may be reported verbally by the seller, and are recorded at the time and date of the original listing of this vessel. Owner's use during the time of this listing may affect the total engine hours upon a prospective buyer's inspection. Buyer assumes responsibility to verify all speeds, consumptions, capacities and other measurements contained herein and otherwise provided, and agrees to instruct his/her agents or his/her surveyor to confirm such details prior to purchase. This vessel is subject to sale, price and inventory changes or withdrawal from market without notice.









