

60 ft 2015 Kadey-Krogen 55 Expedition, LEVITTATE
US\$1,299,000

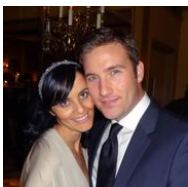
North Palm Beach, Florida, United States

SCHWARTZ & CO.
YACHT SALES



Boat Details

Make:	Kadey-Krogen	Class:	Trawler	Cabins:	2
Model:	55 Expedition	Hull Material:	Fiberglass	Heads:	2
Year:	2015	Drive Type:	Direct Drive	Fuel Type:	Diesel
Length:	60 ft 11 in	Beam:	18 ft	Max Draft:	4 ft 10 in
Price:	US\$1,299,000	Boat Location:	North Palm Beach, Florida, United States		
Condition:	Used	Name:	LEVITTATE		



Michael Schwartz | Schwartz & Co. Yacht Sales

1009 Wexford Drive, Westmont, Illinois, United States

Tel: **312-533-9111**

michael@schwartzco.net

<https://www.schwartzyachts.com>

Description

NOW IN FLORIDA

When you step aboard this Kadey-Krogen 55 Expedition Yacht, you will easily see how it sets itself apart. She has one of the best engineered full-displacement hull designs available. This little ship features a fine entry, an ideal displacement-to-length ratio, and a "wine glass" stern that outperforms most trawlers in both optimal and adverse sea conditions.

Her layout consists of a full-beam salon (offering 25% more area than others her size), a large well-appointed galley and an unrestricted single-level approach to both staterooms, with easy access to the pilothouse through the curved staircase. Immediately upon stepping aboard this immaculate trawler, you'll sense the livability of this design when you step through the double salon doors. Powered by twin John Deere 4045 TFM Tier 3 engines, with a reported range of 4,000+ NM, this engine package delivers the ultimate in reliability and "get home" solutions. This two-owner Krogen 55 offers an unparalleled mix of livability, reliability and superb fit and finish. Levittate is on the market due to an unexpected change in family circumstances.

Information & Features

2015 John Deere 4045AFM85 (Engine 1)

Type:	Inboard	Drive Type:	Direct Drive	Rope Cutter:	true
Fuel Type:	Diesel	Power:	160 hp		
Hours:	1207	Propeller Type:	4 Blade		

2015 John Deere 4045AFM85 (Engine 2)

Type:	Inboard	Drive Type:	Direct Drive	Rope Cutter:	true
Fuel Type:	Diesel	Power:	160 hp		
Hours:	1309	Propeller Type:	4 Blade		

Dimensions

LOA:	60 ft 11 in	Beam:	18 ft
Length On Deck:	55 ft 2 in	Max Draft:	4 ft 10 in
LWL:	49 ft 6 in		

Weights

Ballast:	6,900 lb
Displacement:	87,870 lb

Speed

Range:	4300 nmi
--------	-----------------

Tanks

Fuel:	4 x 470 gal Aluminum
Fresh Water:	2 x 250 gal Stainless Steel
Holding:	1 x 140 gal GRP

Accommodations

Cabins: 2

Heads: 2

ACCOMMODATIONS

Entering Levittate through the large, double weather-tight doors in the cockpit, you step into the enormous open concept salon & galley. To starboard is room for two of your favorite household chairs, while to port is a large L-shape settee with expandable table. Just forward on the port side is the large triangular shaped galley with Bluestar range, convection microwave, full size refrigerator, dishwasher, and wine cooler. Storage abounds.

To starboard, opposite the galley, are the steps to the pilothouse. In the pilothouse, you will find a commanding 360 degree view of your surroundings. Windows are 1/2 inch tempered glass and the welded aluminum Dutch doors are weathertight. Behind the helm chair is a large settee and table that converts to a full size-berth. Outside, there are wing stations on both the port and starboard side of the Portuguese Bridge. Aft of the pilothouse is the boat deck with a 2023 Achilles LSI-290 tender, a 1,250lb crane and an entertaining area and summer outdoor galley.

Down below, between the galley and the steps to the pilothouse is the hallway forward to the two staterooms as well as full-size door access to the machinery space (air-conditioned) and engine room. Moving forward and to starboard is the guest cabin / office, with twin berths and a desk. In the hallway cabinet is a Bosch washer and 220VAC vented dryer. Opposite this cabin is the full guest head which also contains a welded aluminum door for access to machinery spaces and engine room. Forward is the owner's cabin with a walk-around queen berth and full head. Natural light and ventilation abound through two large deck hatches and four opening ports. Sizable port and starboard hanging lockers are complemented by ten drawers.

CONSTRUCTION

- Hull and superstructure molds made from high-grade female tooling.
- Hull construction includes use of USA-made, Cook® gel coat.
- Hand-laid Knytex (in combination with mat and Corecell®) above the waterline; solid fiberglass lamination below the waterline, with blister-resistant vinyl ester resins utilized on the first laminates.
- Impact resist aramid fiber/FRP reinforced stem and stern bottom areas. Superstructure includes Knytex® and mat (in combination with Corecell® cores) and surface mats for printthrough reduction.
- Aft deck is teak.
- Boat and fore decks have GripTex® non-skid finish.
- Bulwark has molded plank lines with gel coat finish.
- Polyurethane formulated marine sealants used at hull-to-deck, boat deck joints and exterior fittings.
- Marine-grade plywood and foam-cored bulkheads with molded fiberglass hat section stringers.
- Interior finished with handcrafted solid cherry and veneers.

GALLEY

- Frigidaire Full-Size Refrigerator/Freezer
- Bluestar 4 BR gas Range w/ Oven
- Maytag Convection Microwave
- GE wine cooler
- Garbage Disposal
- Frigidaire Dishwasher

PILOTHOUSE ELECTRONICS

- Furuno TZT MFD14" touch chart-plotter
- Furuno 4' UHD Digital Radar Array
- Furuno AIS black box Class B
- Simrad 4g Broad Band Radar & 12" MFD touch plotter
- Simrad AP70 autopilot
- (2) Icom M506 VHF's
- (2) Garmin Digital Depth Instruments
- Viewsonic 23 inch monitor connected to pc with Coastal Explorer
- (2) Garmin digital multifunctional displays (additional unit in master stateroom)
- (2) Iris 700 cameras in engine room
- Viewsonic 12 inch monitor for cameras
- FLIR night vision system.
- 12 inch Carlisle and Finch searchlight
- KVH HD7 HD sat TV
- Fusion stereo
- Ritchie compass

PROPULSION

- (2) Tier III John Deere®, #4045AFM85 (~1,550 hrs) providing 160 bhp @2300 rpm
- (2) Transmissions - ZF Marine® #280-1A
- (2) Shafts - Aquamet® 22, 2"diameter
- (2) Shaft Seals - Tides® dripless
- (2) Propellers - Hung Shen®, bronze, 4-bladed, 31"diameter x 16.5" pitch
- (2) Rudders - Stainless steel with protective shoe
- (3) Controls: ZF Mathers Cruise Command electronic (pilotouse, starboard wing station , port wing station)

ELECTRICAL

Generators

- Northern Lights 16kW (~216 hours) with sound shield and water/exhaust separator
- Northern Lights 9kW (~1,029 hours) with sound shield and water/exhaust separator

DC Power

- (2) 12V wired in series for 24VDC generator starting
- (16) 6V 300Ah wired in series (4 banks) for 24VDC ship service
- (2) 24v Lithium main engine starting batteries

AC Power

- Twin Glendinning Cablemaster (aft)
- 50 AMP Maringo and Smart Plug (forward)
- (2) 50 AMP Shore Power Cords
- (2) Isolation Transformers - Charles Industries

Charging/Inverting

- Battery Charger - Mastervolt® 24v 60amp (back up house battery)
- Battery Charger - Mastervolt® 12v 40amp (Gen Start batteries)
- Inverter/Battery Charger - Magnum Energy 4000 watt, 105 amp charger
- (2) Alternators - Balmar® 190 amp, 24-volt

PLUMBING

- (2) Water Tanks - Stainless steel, 250 gallons each
- (2) Dockside Water Pressure Regulators - Jabsco
- Pressure Water System - Headhunter Mach5 Multistage Fresh Water Pressure Pump, 115VAC. Back up 24v fresh water pump
- Water Heater - Torrid®, 30-gallon capacity
- Water Filtration system with separate faucet at galley sink (Seagull)
- Holding Tank - Fiberglass, 140-gallon capacity with SeaLand® macerator
- Holding Tank Indicator and Control Panel: SeaLand® Tank Manager™

MACHINERY SPACE EQUIPMENT

- Bilge Pumps: Rule® (6)@3,700 gallons-per-hour with Ultra® high water alarm at (2) stations
- Emergency Bilge Pump: tied into the raw water intake on each engine
- Engine room intake and exhaust fans with moisture eliminators
- Steering: Teleflex®, hydraulic (1-station)
- Controls: ZF Mathers Cruise Command electronic (3-station)
- Fuel Tanks: (4)aluminum with sight gauges
- Fuel Filters: Dual Racor® w/ vacuum gauge for main engines, generator and fuel polishing
- Five (5) zone Dometic reverse cycle air conditioning. Air conditioning in machinery space
- Sea-Fire FD-1150M fire suppression system with #131-240 shutdown system, manual pull cable & #131-280 panel mounted display alarms
- ESI Fuel Polishing System CFS1000FR,
- 24V DC Reverso oil change system for main engines, gears & generator
- Prep for future water maker install (thru hull and power)
- ABT 22 hp hydraulic bow thruster, with three station controls
- Digital 250/ 9 sqft fins ABT TRAC stabilizers
- Spare filters, pumps, oil, and coolant

COCKPIT

- Teak decking
- Transom door w/ stainless steel latch handle and holdback
- Lazarette access with ladder
- Emergency tiller (located in lazarette)
- Side boarding gates (2)
- Ladder: stainless steel to boat deck
- Transom shower
- 2-Glendinning cable master w/remotes and '75 cords
- Fresh water bibb
- Dockside water pressure
- Overhead LED lighting
- Fore and after shore-power connection
- Swim platform (with under mount ladder and 2 folding cleats) has been removed to accommodate the slip requirements. Original platform and hardware are available.

EXTERIOR AND DECK EQUIPMENT

- Port & starboard docking stations (each with full controls)
- Portuguese bridge with (2) boarding doors and (2) wing stations with engine controls
- Fiberglass cabinet with grill Sea Star propane grill with locker for (2) Trident 17-lb composite propane tanks ES1250
- Davit System
- Maxwell 3500 hydraulic windlass with dual anchors & all chain rode
- Ultra Anchor UA60/132 60kg / 132lbs and Ultra swivel
- Anchor locker deck hatch, Freeman Marine, watertight
- (2) Shorepower inlets at bow, Marinco, 50-amp TV/Phone inlet at bow
- Marinco Freshwater anchor washdown
- Shurflo saltwater anchor washdowns
- Doors, Diamond Sea Glaze, weather-tight, welded aluminum, double doors in Salon, (2) Dutch-style in pilothouse, paint matches superstructure
- Windows, Diamond Sea Glaze, powder coated aluminum, (5) fixed, (13) sliding with screens
- (2) Hatches (master stateroom), Maxwell with screens
- Ports, Manship, stainless steel with screens
- Deck & Bow railings, welded 316L stainless steel Mast, aluminum, painted & hinged, with masthead, anchor & steaming lights
- Lightning ground system - Forespar Master Wand with #2 wire
- Air horn, Kahlenberg with automatic fog-horn whistle
- Thru-hulls & seacocks, bronze
- Hawse pipes & cleats, 316L stainless steel
- Mooring cleats, 316L stainless steel
- Bow eye, 316L stainless steel
- Stern Staples
- Armstrong 4-step slide-out dive ladder in lieu of standard

TENDER

- **NEW** 2023 Achilles LSI-290

EXCLUSIONS

- Personal Items
- Tools

DISCLAIMER

The Company offers the details of this vessel in good faith but cannot guarantee or warrant the accuracy of this information nor warrant the condition of the vessel. A buyer should instruct his agents, or his surveyors, to investigate such details as the buyer desires validated. This vessel is offered subject to prior sale, price change, or withdrawal without notice.













