

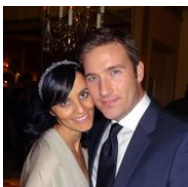
50 ft 2022 Kadey-Krogen 50 Open, Sirena
US\$2,245,000 Tax: Paid, United States
 Stuart, Florida, United States

SCHWARTZ & CO.
 YACHT SALES



Boat Details

Make:	Kadey-Krogen	Class:	Trawler	Fuel Type:	Diesel
Model:	50 Open	Hull Material:	Fiberglass		
Year:	2022	Drive Type:	Direct Drive		
Length:	50 ft	Beam:	17 ft 5 in		
Price:	US\$2,245,000	Boat Location:	Stuart, Florida, United States		
Condition:	Used	Name:	Sirena		



Michael Schwartz | Schwartz & Co. Yacht Sales
 1009 Wexford Drive, Westmont, Illinois, United States
 Tel: **312-533-9111**
 michael@schwartzco.net
<https://www.schwartzyachts.com>

Description

Sirena is the newest Kadey Krogen 50' Open in the US so now is your rare opportunity to get a like new 50' Open without the long wait while we build you one. She is just back from a trip to the Bahamas and is ready to take you back there again or anywhere else in the world.

Information & Features

John Deere Tier III 4045TFM85 (Engine 1)

Type:	Inboard	Drive Type:	Direct Drive	Propeller Material:	Bronze
Fuel Type:	Diesel	Power:	125 hp		
Hours:	330	Propeller Type:	4 Blade		

John Deere Tier III 4045TFM85 (Engine 2)

Type:	Inboard	Drive Type:	Direct Drive	Propeller Material:	Bronze
Fuel Type:	Diesel	Power:	125 hp		
Hours:	330	Propeller Type:	4 Blade		

Dimensions

LOA:	52 ft 9 in	Beam:	17 ft 5 in
Length On Deck:	50 ft 5 in	Max Bridge Clearance:	19 ft 8 in
LWL:	45 ft	Min Draft:	4 ft 6 in

Weights

Ballast:	5,000 lb
Displacement:	68,000 lb

Tanks

Fuel:	2 x 620 gal Aluminum
Fresh Water:	2 x 200 gal Stainless Steel
Holding:	1 x 140 gal GRP

Other

Hull Shape:	Displacement
Flag Of Registry:	United States

Construction

Hull and superstructure made from high-grade female tooling. Hull construction includes use of USA-made, Cook® gel coat. Hand-laid Knytex (in combination with mat and Corecell®) is utilized above waterline and solid fiberglass lamination below the waterline with blister-resistant vinylester resins utilized on first laminates. Stem and stern bottom areas are aramid fiber/FRP reinforced.

Superstructure construction includes Knytex® and mat in combination with Corecell® cores and surface mats for print-through reduction.

There are teak aft and side decks. Boat and fore decks have GripTex® non-skid finish. Bulwark has molded plank lines with gel coat finish.

Polyurethane formulated marine sealants were used at hull-to-deck, boat deck joints and exterior fittings. Bulkheads are marine grade plywood and additional hull strength is achieved with molded fiberglass hat section stringers.

The interior is finished with handcrafted solid cherry and veneers.

Saloon

The spacious Saloon is entered from the large teak covered aft deck up two steps and through a large stainless and glass sliding door. To port is a comfortable L-shaped settee with storage below and a cherry hi-lo table that folds out to twice its size. The table can be used either as a coffee table or large dining table seating up to 8 people. The settee also converts to an extra sleeping area. To starboard there are two comfortable Stressless (TM) leather chairs. Forward of this area is the 86" Sub Zero refrigerator and freezer. Opposite to port is a large gourmet galley.

With two huge windows to port and starboard and a large window and the glass doors to the stern and a view through the pilothouse and the windshield you will see why this model is called the Open. You have 360 degree views outside the boat.

Galley

The Galley is to port and forward in the saloon. It features a Wolf 30" propane stove and oven surrounded by large Cambria custom counters. There is also a Sub Zero refrigerator and freezer, GE trash compactor and GE dishwasher. There is a large appliance garage that powers up out of the counter to the left of the Wolf. To the right is a smaller one perfect for storage of small galley items. A cherry and spruce floor keep the galley bright and give it a warm feel. Forward of the galley is a bulkhead with a retractable wall to separate the galley from the pilothouse. In the down position you have an open field of view forward into the pilothouse and out the forward windows. At the push of a button a wall powers up with a 55" TV mounted on it for entertainment of both saloon and galley.

Major components in the galley include:

- Sub Zero BI-30U/S refrigerator and freezer
- Wolf propane range/oven
- GE 30" microwave oven
- GE Trash compactor
- Perlick Signature Series wine refrigerator
- GE Dishwasher
- Sea Gull water filtration w/ dedicated faucet for sink and plumbed to ice maker in Sub Zero

Pilothouse and Electronics

The Pilothouse is up just one step from the saloon and galley and is truly the center of activity when underway. A Llebroc helm chair with flip up bolster keeps the captain comfortable underway. An Ultraleather L-shaped settee with storage at the end is behind the helm. With its mounted pedestal table it is the perfect place for a relaxing dinner or even for a second office space. This settee also converts to a double watch berth if needed. A custom designed seat allows the mate to sit near the captain underway. There is storage to starboard of the settee under the staircase to the flybridge. Welded aluminum Dutch doors port and starboard allow for easy access to all decks. Stepping out of the pilothouse doors lead to the Portuguese bridge deck. There are ship's control stations on both port and starboard corners of the Portuguese bridge making docking in any location easy. There are doors leading thru the Portuguese bridge to the bow where there is a bench seat to watch the world go by.

- (2) Garmin 8622 sunlight 22" GPS/ plotter in pilothouse
- (2) Garmin 8612 sunlight 12" GPS/ plotter on flybridge
- Garmin Fantom-54 4' 72 mile open array radar
- Garmin Reactor-40 autopilot w/ GHC-20 shadow drive (2nd station on flybridge)
- Garmin AIS-800 Class B+
- Garmin GXM-54 Sirius marine weather receiver
- Garmin GMI-20 color multifunction display (pilothouse)
- Garmin GMI-20 color multifunction display (flybridge)
- Garmin GMI-20 color multifunction display (master stateroom)
- N-2K Bronze depth, speed, temp "smart"ducer
- Airmar 220WX weather station mast transducer
- Dockmate remote engine, thruster and windlass control
- ICOM M-506 DSC VHF radio in pilothouse and on flybridge
- ICOM HM-195 Mk-IV full function VHF remote in pilothouse and on flybridge
- FLIR M-364C stabilized night vision camera w/ both thermal and ultra low light
- Starlink Flat high performance kit w/ SeaView wedge mount & Cyber Power EC750G
- IRIS-580 8 CCTV camera system keypad
- IRIS-090 stainless steel camera on hardtop looking astern
- IRIS=090 stainless steel cameras for cockpit, swim platform and 2 in engine room

Master Stateroom

The Master Stateroom is midship down a beautiful curved stairway. It features an island Queen berth with a Sleep Number mattress. There are two extra large stainless portholes w/ screens over the headboard providing a bright and airy feel to the stateroom. There is also some accent lighting above these portholes. There are multiple large drawers for storage under the queen island berth as well as additional storage accessed via a pneumatic lift for the bed mattress. There are large hanging lockers on the forward bulkhead and on the aft bulkhead there are large locker cabinets. At the foot of the berth is another hanging locker and the door into the ensuite head. There is also a safe located in the room affixed to the boat.

Ensuite Head

The Ensuite Head is to the starboard of the stateroom. There is a very large stall shower with a frameless glass door and molded seat. With a very large stainless porthole in the shower and a second outboard of the counter in the head you have wonderful light and ventilation. The counter is Cambria and features a custom showpiece sink basin with Grohe fixtures. There is also a Dometic porcelain freshwater toilet.

Guest Stateroom

The Guest Stateroom is forward to take full advantage of the full width of the yacht. It features an island Queen bed with abundant large drawer storage under as well as a huge compartment under the bed accessed by a pneumatic lifted mattress. A hanging locker provides additional storage. There are 4 large stainless steel opening ports and 2 overhead hatches with Oceanair Skyscreen and shades that make the room feel large, bright and airy. Just aft of the stateroom is a landing with a closet containing the stacked washer/dryer units and a separate storage closet.

Guest Ensuite Head

The Guest Ensuite Head is located aft and to starboard of the guest stateroom and is an ensuite head. The head features a separate shower stall with glass door and molded seat and a Cambria topped counter with vessel sink. There is a stainless steel opening port in the shower stall for natural light and ventilation.

Flybridge

The Flybridge is accessed from an internal staircase. It is equipped with a hard top with lighting, Stidd bench seat, and a teak table. The settee has custom Sunbrella cushions and pop-up accent lighting. Behind the helm area on the flybridge is the summer kitchen equipped with a SeaStar propane BBQ, Isotherm refrigerator, freshwater spigot and stainless sink w/ hot and cold water & storage lockers.

Engine Room

The Engine Room on the Krogen 50' Open is truly huge with near 7' of headroom and it is accessed from both the master stateroom or the lazarette thru watertight doors. The engine room makes it so nice to work on your machinery and it is even air conditioned.

- Twin Tier III John Deere 4045TFM85 125 hp with ZF Marine 2.917:1 ratio gear (330 hours)
- Northern Lights® 12KW generator with sound shield (280 hours)
- Northern Lights® generator water exhaust separator
- ABT Hydraulic stabilizers w/ STAR option for at anchor use
- ABT® 25hp hydraulic bow thruster- proportional controls at all 4 stations
- ABT® 15hp hydraulic stern thruster- proportional controls at all 4 stations
- Reverso® oil change system plumbed to both engines, transmissions and generator
- Reverso® fuel polishing system
- Walker Airsep air filters on engines
- CruiseAir reverse cycle AC/Heat unit for engine room (27,000 BTU)
- Sea Fire® automatic fire suppression system for engine room
- Sea Fire® Stinger automatic fire suppression system for generator
- Dual Racor® 900 fuel filters w/ vacuum gauges for main engines and generator
- Dual Balmar Hi-Output alternators (190 and 60 amp) with external smart regulators
- Manship engine room moisture eliminators with biaxial variable hi-speed fans
- ZF Mathers Cruise Command (4-station) engine controls
- Teleflex hydraulic steering (2 stations)
- Raritan 20 gallon water heater
- Johnson variable speed 24V DC fresh water pump w/ 5 gallon accumulator tank
- (2) Jabsco dockside pressure regulators
- (5) Rule bilge pumps @3,700 gallons per hour with Ultra high water alarm (2 station)
- Emergency bilge pump tied into raw water intake on main engine
- Centek fiberglass muffler
- Engine room intake and exhaust fans with moisture eliminators
- (2) aluminum fuel tanks with sight gauges for 1,240 gallon total capacity
- Fiberglass 140 gallon tank w/ macerator (black water)
- Fireboy Xintex CO detectors
- (2) 316L Stainless steel water tanks for 400 gallon total capacity

Electrical

- Northern Lights® 12KW generator with sound shield (233 hours)
- Glendenning shore power retrieval system w/ 85' of cable
- Magnum Energy 4000 watt inverter/charger
- 240 volt Charles Isolation Boost Transformer
- Charles 60 amp battery charger
- Batteries: Lifeline AGM (2) 12-volt wired in series for 24V DC engine starting, (1) 12-volt wired in series for 24V DC generator starting,

Additional Components

- Glendenning shore power retrieval system w/ 85' of cable
- i2 Systems LED lighting throughout
- All exterior lighting is LED
- Manship Engine Room Moisture Eliminators with biaxial variable hi-speed fans
- SeaWater Pro 120 volt 600 GPD double membrane watermaker w/ remote panel
- CruiseAir reverse cycle AC/Heat units - remote mounted compressors equipped with their SMXHT control panels throughout
- Maxwell Vertical hydraulic windlass w/ wildcat and gypsy
- Tides drip-less shaft seals
- Spurs Line cutters on both shafts
- 11' AB Oceanus RIB with 25 hp Yamaha outboard
- Stern staples for safety at sea w/ cleats on swim platform for tender
- Steelhead ES1000 electric hydraulic davit system w/ power rotation
- Maxwell anchor remote control station with chain counter at pilothouse and flybridge
- Rocna 55 with 300' 3/8 chain
- Freeman watertight deck hatch color matched to deck gelcoat for anchor locker
- Bow shore power inlet
- Custom canvas covers for windows
- LED Flybridge and Boat Deck Lighting
- Many custom stainless handrails
- Trident propane locker with (2) 20lb aluminum propane tanks
- Fresh and Saltwater wash downs
- Custom Sunbrella exterior seating cushions
- Cockpit shower

Exclusions

Owner's personal effects, artwork and tools.

Two kayaks and aft deck teak furniture.

Disclaimer

The Company offers the details of this vessel in good faith but cannot guarantee or warrant the accuracy of this information nor warrant the condition of the vessel. A buyer should instruct his agents, or his surveyors, to investigate such details as the buyer desires validated. This vessel is offered subject to prior sale, price change, or withdrawal without notice.

