

58 ft 2017 Kadey-Krogen 58EB, CHERYL ANN

US\$2,250,000

Annapolis, Maryland, United States

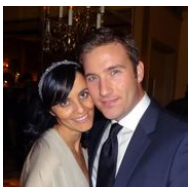
SCHWARTZ & CO.

YACHT SALES



Boat Details

| | | | | | |
|------------|----------------------|----------------|---|------------|-----------------|
| Make: | Kadey-Krogen | Class: | Trawler | Cabins: | 2 |
| Model: | 58EB | Hull Material: | Fiberglass | Berths: | 3 |
| Year: | 2017 | Drive Type: | Direct Drive | Heads: | 3 |
| Length: | 58 ft | Beam: | 18 ft 10 in | Fuel Type: | Diesel |
| Price: | US\$2,250,000 | Boat Location: | Annapolis, Maryland, United States | Max Speed: | 10.12 kn |
| Condition: | Used | Name: | CHERYL ANN | | |



Michael Schwartz | Schwartz & Co. Yacht Sales

1009 Wexford Drive, Westmont, Illinois, United States

Tel: **312-533-9111**

michael@schwartzco.net

<https://www.schwartzyachts.com>

Description

Price Improvement to \$2,250,000. New video introduction provided by industry veteran and production consultant, Steve D'Antonio.

CHERYL ANN is a sophisticated and extensively-equipped Kadey-Krogen 58EB built in the popular two cabin, open office arrangement. She is for true bluewater exploration featuring a full displacement hull, a range up to 5600nm and extra redundancy found on no other similar model. Experienced yachtsmen will admire CHERYL ANN's upgrades, engineering and craftsmanship.

CHERYL ANN is a one-owner yacht, built in collaboration with the Kadey-Krogen production and architectural teams, as well as one of the industry's leading independent trawler production consultants. They designed CHERYL ANN for confidence, strength, safety and comfort while cruising. Extra considerations include dual air chillers, hydronic auxiliary heating system, back-up windlass, back-up water pumps, back-up bilge pumps, extra emergency by-passes and shut offs - and a full stabilization and flopper stopper system.

CHERYL ANN also has an upgraded energy management system featuring additional battery banks, inverters, and an auto-start generator capable of supporting house and air-conditioning systems while reducing generator run time - especially helpful while cruising warmer climates.

CHERYL ANN'S classic looks are a head turner, featuring a Carinthia blue hull, extended swim platform, gorgeous teak wood interior with 4" wide custom plank flooring, enlarged master shower, custom interior soft goods, and a gourmet galley with marble and tile accents. The large passagemaking pilothouse features a black headliner, dual helm chairs, large watch berth, day head, and a spacious helm area complete with Furuno electronics. The large open office is the perfect den setting for remote work, or passagemaking planning.

Plus, as the only 58EB built to date featuring a bimini top and molded aluminum arch that can be lowered to less than 19', CHERYL ANN can take you anywhere - around the Great Loop, across to the Baltics or down to the tropics.

New build lead time for the next available 58EB is over two years. Replacement value for model with similar options is over \$3.5 million. All maintenance up to date. Recent professional oversight and management.

Showings accepted by pre-arranged appointments only.

Information & Features

John Deere 4045AFM85 (Engine 1)

| | | | | | |
|------------|----------------|-----------------|---------------------|---------------------|---------------|
| Type: | Inboard | Drive Type: | Direct Drive | Propeller Material: | Bronze |
| Fuel Type: | Diesel | Power: | 160 hp | | |
| Hours: | 345 | Propeller Type: | 4 Blade | | |

John Deere 4045AFM85 (Engine 2)

| | | | | | |
|------------|----------------|-----------------|---------------------|---------------------|---------------|
| Type: | Inboard | Drive Type: | Direct Drive | Propeller Material: | Bronze |
| Fuel Type: | Diesel | Power: | 160 hp | | |
| Hours: | 345 | Propeller Type: | 4 Blade | | |

Dimensions

| | | | |
|-----------------|-------------------|-----------------------|--------------------|
| LOA: | 64 ft 6 in | Beam: | 18 ft 10 in |
| Length On Deck: | 58 ft | Max Bridge Clearance: | 27 ft 10 in |
| LWL: | 52 ft 3 in | Min Draft: | 5 ft 4 in |

Weights

| | |
|---------------|-------------------|
| Dry Weight: | 105,000 lb |
| Ballast: | 7,000 lb |
| Displacement: | 99,230 lb |

Speed

| | |
|-----------------|-----------------|
| Cruising Speed: | 8.96 kn |
| Max Speed: | 10.12 kn |

Seating

Liferaft Capacity: **6**

Tanks

| | |
|--------------|------------------------------------|
| Fuel: | 1 x 1,760 gal Aluminum |
| Fresh Water: | 1 x 400 gal Stainless Steel |
| Holding: | 1 x 100 gal GRP |

Accommodations

| | | | |
|----------------|----------|--------|----------|
| Single Berths: | 1 | Heads: | 3 |
| Double Berths: | 2 | | |
| Cabins: | 2 | | |

Other

| | |
|-------------------|----------------------|
| Hull Shape: | Displacement |
| Flag Of Registry: | United States |

Construction

- Hull and superstructure molds from high-grade female tooling.
- Hull construction includes use of USA-made, Cook® gel coat; Knytex (in combination with mat and Airex®) above waterline; solid fiberglass lamination below waterline, with blister-resistant vinylester resins utilized on first laminates. Aramid fiber/FRP reinforced stem and stern bottom areas.
- Superstructure includes Knytex® and mat in combination with Divinycell® cores and surface mats for print-through reduction.
- Teak aft and side decks. Boat and fore decks have GripTex® non-skid finish. Bulwark has molded plank lines with gel coat finish.
- Polyurethane formulated marine sealants used at hull-to-deck, boat deck joints and exterior fittings.
- Marine-grade plywood bulkheads with molded fiberglass hat section stringers.
- Interior crafted with custom teak, custom teak wide-plank flooring, and teak veneers throughout

Saloon & Galley

Saloon:

Upon entering Cheryl Ann through the double welded aluminium weathertight doors from the fully covered "back deck", you will be welcomed by the sophistication and class of the gorgeous custom teak saloon and galley, which demands attention at first sight.

- Custom teak interior wood
- Custom 4" teak planking floor with spruce inlays
- Custom designer fabric L-shaped settee with under-seat storage to with expandable hi-lo free-standing table (to starboard)
- TV lift with TV
- Two (2) Ekornes chairs, 1 medium, 1 large with Paloma leather, teak base and matching ottomans
- Phantom screen for natural ventilation
- Custom window treatments

Galley:

The open faced galley is forward of the saloon on the starboard side and is a chef's delight. There is abundant storage and plenty of counter space. Also, the galley has a separate entrance via a welded aluminum Dutch door making provisioning the galley and pantry effortless.

- Single level countertops with custom extension by 6" for additional space plus a bump out for additional entertaining space
- Two leather barstools aft of countertop for additional seating
- Custom marble countertop
- Kitchen Aid refrigerator/freezer
- GE convection/microwave
- Trash compactor
- Bluestar 24" propane range/oven all in SS finish
- Custom hideaway screen added to galley door

Master Stateroom & Head

The master stateroom is forward to take advantage of natural ventilation at anchor. There are four large stainless steel opening ports and two overhead hatches with privacy screens.

As with all areas of a Kadey-Krogen storage is excellent in the master stateroom. There are six large drawers under the queen-size island berth with a memory foam mattress is on a platform with hydraulic cylinder assists to access the entire under-berth area. There are two hanging lockers and a mirrored/lighted six-drawer dresser.

- Island queen
- Custom teak wood
- TV
- Custom wall fabric for texture
- Security safe under master berth
- LED overhead lighting, LED reading lights, dimmable LED dresser lighting
- Oscillating electric fans for additional air circulation

The ensuite head is on the aft port side of the stateroom. There is an oversized stall shower with door and molded seat, mirrored medicine cabinets, granite topped vanity, freshwater toilet and linen storage. There are opening stainless steel ports above the vanity and in the shower.

- Custom sink and countertops
- Oversized shower stall (6" larger than standard)

Guest Stateroom & Head

On the starboard side, aft of the guest head, is a stateroom with a queen berth with foam mattresses, hanging locker and a private entrance to the guest head.

- Teak wood
- TV
- LED lighting
- LED reading lights
- Oscillating electric fans for additional air circulation

The guest head is located between the master stateroom and the starboard guest stateroom. There is a separate stall shower with glass door, molded seat and opening port. A large storage locker is located opposite the sink and toilet. There is a freshwater toilet, mirrored medicine cabinet and granite topped vanity.

- Custom sink and fixtures

Washer/Dryer

Opposite and outside the guest head in the companionway is a Maytag washer and dryer - a convenient location for everyday living

Open Office

Below deck to port is an open office for the ultimate remote work environment. The area features a dedicated oversized desk area for computers, printers and monitors, as well as multiple drawers, cabinets, and bookshelves. To keep the space bright with natural light, the office area features two large, oversized port lights. Extra storage space includes an area for dry wine storage/racks.

- Custom teak wood
- Electric oscillating fans for additional air circulation
- Large, leather office chair
- Wine rack

Pilothouse

The raised pilothouse serves as the operations and command center for CHERYL ANN. Complete with an extensive Furuno electronics package, custom black headliner along side two LeBroc helm chairs with cupholders. The L-shaped settee and pedestal mounted expandable table provide extra work or entertaining space. A day head with a s/s sink, granite countertops, exhaust fan with timer, and freshwater toilet provides convenience. A large watchberth with shelving, lighting and privacy curtain provides close access during passagemaking. There are welded aluminum Dutch doors port and starboard for easy access to all decks. Visibility is excellent for captain and guests.

- Custom black headliner
- Red/white LED overhead dimmable lighting
- Day head
- Watch berth with privacy curtain
- Two (2) LeBroc helm chairs with cupholders

Electronics

Pilothouse Electronics

- Yacht Controller® handheld remote docking system
- 4 Green Marine 19" LED 1000 nit 12/24VDC Glass Bridge Touch Display (Navnet & Computer)
- 2 Remote Control Unit for NavNet TZtouch
- 1 Icom M604A, 25W VHF w/25W hailer BLACK with Rear Mic
- 1 Command Mic w. extension
- 1 Furuno 24" Solid State Doppler Radar
- 1 Furuno UHD Digital Radar for NavNet 3D, 12kW, 72 n.m.
- 1 Echo Pilot 3D Forward Scanning Sonar FLS-3D
- 2 Furuno F170 4.1" Color LCD Instrument Display
- 1 AT53TS16-2 (Match AV90/2) - 16' SSB Antenna
- Furuno 220WX Ultrasonic Weather Station (mounted on mast)
- 1 Bronze Thru-Hull, Furuno DT800MSF Digital Depth and Temp Sensor, NMEA2000: displayed as 1) speed, 2) temp and 3) short range depth
- 1 Bronze Thru-Hull, Furuno B275 Digital Depth and Temp Sensor, NMEA2000: used for high accuracy extended depth (for fishing). Programmable. Displays via the Furuno DFF-1 on the large monitors as a graph
- 1 AIS Transponder with Display - Class A
- 1 Furuno Sirius/XM Satellite Weather Receiver
- 1 Million* CD Remote-Controlled Searchlight (12/24V)
- 4 Iris 700 TVL 2.8 mm Wide Angle Mini Ball IR Camera (2 - engine room, 1 - Laz 1 -Mast)
- 1 FLIR Dual-Payload Infrared/visible Spectrum Camera with Two Station Remote-Controlled Pan/Tilt Function
- BoatView™ Camera System: Provides six cameras dedicated for docking, controllable via touchscreen, viewable in PH & on FB
- 1 KVH TracPhone V7-IP; Ku-band Antenna; Rack-mountable Integrated CommBox Modem (ICM)
- 1 Wifi Amplifier
- 1 Cellular Amplifier
- 1 KVH TracVision HD7 w/Ka/Ku/Ka-band TriAD Technology; for DIRECTV U.S HDTV

Flybridge Electronics

- 2 Green Marine 17" LED 1000 nit 12/24VDC NON_TOUCH Display (Navnet & Computer)
- 2 Remote Control Units for NavNet TZtouch
- 1 Icom M604A, 25W VHF w/25W hailer BLACK with Rear Mic
- 1 Command Mic
- Dual Hailer Horn (fwd facing/aft facing)
- 1 Furuno NavPilot 711C color Display
- 2 Furuno F170 4.1" Color LCD Instrument Display

Salon Entertainment Equipment

- 1 Pre-Amp / 7 Amplifier Channel A/V receiver

- 1 Dual woofer back-to-back bipolar design, 900 Watts Dynamic Peak Power/300 Watts RMS Sustained
- 1 Fusion MS-FR4021 4" Outdoor Speaker (aft deck)
- 2 Paradigm AMS-100R 7.7" Speaker (PAIR)

Pilothouse Entertainment Equipment

- 1 Fusion UD750
- 1 Fusion 6" 2-Way Full Range In-Ceiling Speakers (Pilothouse)
- 1 Fusion 6" Hi-Performance Round Speaker (Flybridge))
- 1 SiriusXM SXV3000 Tuner (direct to PH radio, available in Salon, controlled from PH)

Saloon Entertainment Equipment

- 1 Samsung - 40" UHD with WIFI (42.8" w x 24" h)
- 1 Samsung BD-J7500 1 Disc(s) Blu-ray Disc Player - 1080p
- 1 DIRECTV H24 MPEG-4 Enabled Commercial Receiver

Master Stateroom Equipment

- 1 Samsung 19"

Guest Stateroom Equipment

- 1 Samsung 19" TV

Machinery, Engine Room and Components

- Engines: Twin - Tier III John Deere® 4045AFM85 160hp @ 2300rpm with ZF Marine® 2.91:1 ratio gear (345 hours)
- Bilge Pumps: Rule® (5) @ 3,700 gallons-per-hour with Ultra® high water alarm at (2) stations
- Emergency Bilge Pump #1: tied into the main engine raw water intake
- Hydraulic emergency bilge pump #2 (backup): Pacer # 2E2JL HYC, 240 GPM pump with Roxtec bulkhead fittings - additional support designed to keep the boat afloat during a substantial hull breach while temporary repairs are made
- Engine Fire Suppression System: Sea-Fire® FD-1150M with automatic shutdown, alarm and manual pull
- Generator Fire Suppression System: Sea-Fire Stinger
- Muffler: Centek®, fiberglass
- Steering: Teleflex®, hydraulic (3-station)
- Controls: ZF Mathers Cruise Command, electronic (3-station)
- Bow Thruster: ABT 25 hp with four station controls
- Stern Thruster: ABT 15hp with four station controls
- Stabilization: ABT Trac with 9sq ft fins, package includes Logan clutches
- Fuel Tanks: (4) aluminum, sight gauges with four (4) s/s ball valves w. spring return handles
- Fuel Filters: Six (6) Dual Racor® w/ Wika vacuum gauge (model 4389235 with red drag pointer) for main engines and generator. Includes filter select valve on each pair to bypass one filter for service with engines and/or genset operating.
- UL marine brass valves on fuel filters
- Oil Change system: Reverso GP-703 for main engine, gear & generator
- Engine room intake and exhaust fans with moisture eliminators
- Engine Room Ventilation: Dampners added for fire control
- Water Piping: copper, insulated.
- Outside water valves can be isolated and drained independent of internal water lines for operations in freezing environments
- Dockside Water Pressure Regulator: (2) Jabsco®
- Pressure Water System (2): Headhunter®, 24V DC backup pump in line with primary 120V AC fresh water pump
- Water Heater: Torrid®, 30-gallon capacity with bypass manifold tied to port engine and Honeywell AM-1 series mixing valve to prevent scalding
- Water Tank: 400-gallon stainless steel
- Holding Tank: fiberglass, 100-gallon capacity with macerator
- Shaft: Aquamet® 22, 2-3/4" diameter
- Shaft Seal: Tides® dripless
- Propeller: Hung Shen® bronze, 4 -bladed, 38" diameter, 26" pitch
- Rudder: stainless steel with protective shoe
- Spur line cutters (2) - one on each propeller shaft
- Fuel shutoffs added outside of engine room

- Fuel transfer and polishing pump: AXI Smart FPS-SX-R 150 GPH/110V/60HZ with SFC-50 Smart filtration controller & Racor 1000 filter with vacuum gauge
- Seacocks: Groco BV series, ARG series internal strainers with optional metal lids & Groco ASC series external strainers.
- Workbench
- Sound Insulated: Pyrotek, Sorberflex with perforated aluminum
- Stanchion Isolators: Soundown
- Lighting: Imtra®, LED
- Doors: weather-tight
- Sole boards with Awlgrip non-skid paint
- Fresh water hose with nozzle

Electrical

- Generator: Northern Lights® with sound shield – 25 kw (182 hours) TSCM digital controller (configurable to autostart at programmable battery state of charge)
- Generator Water/Exhaust Separator: Northern Lights
- Air-Conditioning: Air Chillers (2): Main system and complete back-up circulation pump with valves and flushing ports for condensers. Condensate tray pumps installed under pumps
- Electrical Panel: 120/240-volt AC and 12/24-volt DC, with circuit breakers
- Tinned wiring, throughout
- Battery Boxes: fiberglass
- Battery House: Five (5) battery banks (qty 4 each) of Lifeline GPL-L16T with switches at each bank
- Five (5) Phoenix inverters, 4 Blue Seas 1000A power bars
- Auto relay (Cyrix-CT 12/24-230) for charging start bank
- Battery Engine and Generator: 1 bank (qty 2) of Lifeline GPL-3100T for engines and 1 GPL-2400T for generator
- Battery temp sensors for voltage regulators, inverters and chargers
- Four (4) battery chargers (Skylia-I 24/100 (1+1))
- Victron 1000A shunt
- Orion 24/12-70 DC-DC converter
- Two (2) 24kW Charles PM3 isolation transformers and one (1) PM3-100 shore power conditioner
- Battery isolation switches for each battery set
- Alternators on each engine with external regulators: Balmar®, 190amp, 24V DC
- Cablemasters: (2) Glendinning® with 75' shore power cords and remote controls
- SSB ground with Dyna plate and 3" copper strap to pilothouse
- LightningGround System: Forespar
- LED Lighting throughout interior and exterior, all circuits dimmable and red/white selectable when possible

Additional Components & Miscellaneous

- Awlgrip painted blue hull
- All teak interiors with custom 4" planking and spruce inlays
- Hurricane hydronic heating system (additional heating): 50,000 BTU's
- Watermaker: Parker Village Marine model# STW 800, 230 VAC
- Water softener: 3,200 gallon capacity for whole boat tied in at fresh water pump
- Everpure water filtration system at galley sink for galley sink, refrigerator, cockpit sink, flybridge sink
- No plastic through hulls or gate valves used on entire yacht
- Seacocks: Groco BV series & strainers Groco ARG series internal strainers with optional metal lids, and Groco ASC series external strainers in lieu of standard
- Hydraulic davit: ES 1200 with 15' extended boom to launch portside & aft
- Storm plate receivers (s/s) on port and starboard saloon windows
- Boatdeck freezer or refrigerator, user configurable with dual controls and electronic thermostat
- Flopper stopper stabilization system (secondary)
- Flybridge windscreen
- Extended swim platform
- Rod Holders (4) in cockpit
- Underwater lights
- Removable stern staples on swim platform
- Armstrong 4-step slide-out dive ladder
- Teak cap rail finished with Epifanes clear gloss varnish
- EPRIB: ACR GlobalFix Pro
- Liferaft: Viking RescueYou, Ocean, UKL, 6-person
- Tender: AB model 10ALX with Torqeedo Cruise 4.0T electric outboard, two 24V power supplies, and two 1700W fast chargers
- Interior fans: Eleven (11) additional electric turbo wall fans throughout for additional air circulation
- Security safe
- Central vacuum (centrally located in office)
- Custom canvas package, including top deck safety rails
- Custom textline package for cockpit "back porch"
- Annual AwlCare, Wax & Compound (scheduled 10/31/22)

Decks

Aft Deck

- Cockpit with teak decking
- Transom Door with stainless steel latch handle and hold back
- Transom Shower: Scandvik, hot/cold fresh water
- Extended Custom Swim Platform: fiberglass with under mount swim dive ladder and (2) folding cleats
- Lazarette access hatch with ladder
- Emergency Tiller
- Convenience Cabinet: sink with storage
- Fresh Water Bib
- TV Inlet: Marince®
- Side Boarding Door: starboard side amidships, port side in aft cockpit with stainless steel latch handle and hold back
- Overhead LED red/white combination lighting

Portuguese Bridge

- Wing Stations with engine and thruster controls (2)
- Boarding Doors: (2) with stainless steel latch handle and hold backs

Flybridge/Boat Deck

- Boat Deck Railings: welded 316L stainless steel
- Radar arch with anchor & steaming light and LED red/white combination lighting. Radar arch can be lowered (with help) to gain additional bridge clearance (18'5")
- Bimini top attached to radar arch
- Air Horn: Kahlenberg® with automatic fog-horn whistle control in pilothouse
- Wheel: Edson®, stainless steel, destroyer type
- Compass: Ritchie®
- FRP electronics helm console
- Helm Chair: LeBroc double-wide dual seating bench helm chair
- U-shaped settee with storage below and cushions with Sunbrella fabric and (2) high gloss teak tables
- Davit: Steelhead Marine ES-1250 with four function hydraulics and standpipe
- Wet bar with sink Isotherm Cruise 85 refrigerator and storage compartment
- FRP Summer Kitchen cabinet with Sea Star model SSBQ24 propane BBQ, propane locker with (2) 20Lb aluminum propane cylinders, and storage compartment with extra propane sensor to meet ABYC standards

Bow

- Bow Railings: welded 316L stainless steel
- Bowsprit and Pulpit with (2) Anchor Rollers
- Salt Water Washdown Pump: Shurflo®
- Fresh Water bib
- Anchors (3): Rocna 70 (main), Manson Ray 80 (secondary), Danforth (extra)

- Windlass: Maxwell®, VWC3500 (hydraulic) with chain wheel and independent rope capstan with 400 feet of 1/2-inch
- 2nd Windlass (DC electric): Maxwell VWC 3500 rode 100' 1/2 chain & 300' 3/4" three strand nylon
- Water Tight Anchor Locker Deck Hatch: Freeman (no paint)
- Shore Power Inlets: (2) Smart Plugs

• TV Inlet: Maritco®
Does Not Convey

All personal belongings, tools, artwork, owner's plaque and ship's clock do not convey with sale of boat.

Disclaimer

The Company offers the details of this vessel in good faith but cannot guarantee or warrant the accuracy of this information nor warrant the condition of the vessel. A buyer should instruct his agents, or his surveyors, to investigate such details as the buyer desires validated. This vessel is offered subject to prior sale, price change, or withdrawal without notice.

Disclaimer

The Company offers the details of this vessel in good faith but cannot guarantee or warrant the accuracy of this information nor warrant the condition of the vessel. A buyer should instruct his agents, or his surveyors, to investigate such details as the buyer desires validated. This vessel is offered subject to prior sale, price change, or withdrawal without notice.





