

34 ft 2003 American Tug 34, Be Blest II

US\$297,000

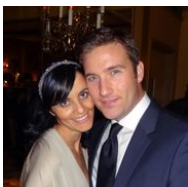
East Boston, Massachusetts, United States

SCHWARTZ & CO.
YACHT SALES



Boat Details

Make:	American Tug	Class:	Tug	Guest Heads:	1
Model:	34	Hull Material:	Fiberglass	Fuel Type:	Diesel
Year:	2003	Drive Type:	Direct Drive		
Length:	34 ft	Beam:	13 ft 3 in		
Price:	US\$297,000	Boat Location:	East Boston, Massachusetts, United States		
Condition:	Used	Name:	Be Blest II		



Michael Schwartz | Schwartz & Co. Yacht Sales

1009 Wexford Drive, Westmont, Illinois, United States

Tel: **312-533-9111**

michael@schwartzco.net

<https://www.schwartzyachts.com>

Description

Must see this well maintained American Tug 34. Spring service to include house buff and wax, bottom paint and new generator battery. Perfect cruiser ready to go!

New Hull Paint

New Stern Thruster

All new wiring for lights

New Raymarine GPS plotter

New House Batteries

Information & Features

Cummins 6BTA 5.9 (Engine 1)

Type:	Inboard	Drive Type:	Direct Drive	Propeller Material:	Alloy
Fuel Type:	Diesel	Power:	370 hp		
Hours:	2920	Propeller Type:	4 Blade		

Dimensions

LOA:	34 ft 5 in
Beam:	13 ft 3 in
Min Draft:	3 ft 5 in

Weights

Displacement:	20,000 lb
---------------	------------------

Tanks

Fuel:	400 gal
Fresh Water:	145 gal
Holding:	45 gal

Accommodations

Guest Heads:	1
--------------	----------

Vessel Walkthrough

Enter the cockpit of BE BLEST II through the transom door or over the side deck and down built-in boarding steps. The cockpit is large with the bridge deck overhead for weather protection. Along the starboard side and forward is a locker with plenty of room for additional storage. A cockpit lazarette opens to reveal the steering mechanism and also offers additional storage space. Along the port side of the cockpit is a stainless steel ladder that leads up to the upper bridge decks. Here there are stainless steel railings for safety and a bimini top for sun and weather protection while lounging on the top and to store water toys such as a canoe or kayak. There is a hinged stainless steel radar arch on top of the faux smokestack.

Back down below, the side decks are wide enough to move forward easily. American Tug has added stout stainless steel grab rails on the deckhouse to make passage safer. Forward of the pilothouse, stainless rails provide protection for crew working on the foredeck. Step through the handsome AJR door and into the galley and salon.

The galley is starboard side, arrayed along the after bulkhead, up to the wall separating the galley and pilothouse. A corner sink is molded into a Corian-style counter-top; the galley stove is in the center with a great exterior view to starboard. A refrigerator/freezer is in the back wall of the pilothouse. The long L-shaped galley counter will accommodate both a cook and a helper (or two) when major meals are planned. Many larger boats aren't that generous with galley space and it will please the most discriminating on-board chef.

Just inside the doorway on the port side is a large locker fitted beneath the aft window. The "L" shaped settee covered in ultra-leather is along the port side of the salon. It hides an enormous amount of storage space and opens up to a double berth. The dinette table is a high-low and can be used as a dinette table or a coffee table and has a folding leaf. Forward on the port side is a control panel for the generator and stereo system. Large windows offer excellent natural light and the forward and aft windows slide open for ventilation. The window shades offer privacy.

Up a few steps, you enter the large pilothouse. The false smokestack on the upper deck opens above the steps to offer excellent headroom to enter the pilothouse. Inside the stack is a hatch that provides for ventilation and offers natural light to the steps. There are port and starboard pilot house doors and most windows will slide open, with screens, to give more than adequate ventilation. The helm and companion seats are double seats and the helm seat will adjust fore and aft. Under the seats are storage drawers and foot rests.

The large helm counter offers excellent chart room and there is a large hinged top "desk" for storing charts and accessories. The helm is located along the starboard side and the array of electronics is impressive while engine controls and gauges are within easy reach. Reverse pilot house windows offer individual wipers and the helm has excellent 360 degree visibility. The electrical panel is located in the pilothouse and is protected by an acrylic door. Engine room access is through two hatches in the pilot house. There is a stainless steel ladder for complete access to the engine and engine room spaces. Well lighted with excellent access to all the engine room machinery and generator.

Along the port side is the companionway to the lower cabin. The companionway curves slightly inboard and offers a built-in bookcase to port and a storage locker at the bottom of the steps. Immediately to starboard is access into the head compartment. The head also offers a private entry through the lower stateroom. The head features a teak and holly sole and a solid surface counter-top with a easy-to-clean molded sink. There is a Vacu-flush head and the ensuite shower stall is spacious with plenty of headroom. Stainless steel hardware enhance the head. The lower stateroom features a center-line queen bed with large built-in drawers under the berth. There is a large cedar-lined hanging closet along the starboard side with a shelf and cubby storage from the locker forward. On the port side is a shelved linen closet and more storage going forward. Over the berth is a hatch to let in cooling breezes. The stateroom has private access to the head. Behind the bed is a forward bulkhead with access into the anchor locker.

Equipment

Sidepower bow thruster
Sidepower stern thruster - new in 2023
Windlass with remote
spare prop
Reverso Oil Change system
Onan 5kw generator with sound shield - 500 hours
Reverse cycle air conditioning system
Separate heater

Galley equipment

Molded twin Corian sinks with fitted cutting board insert
Nova Kool upright refrigerator with freezer
Sharp microwave
Three burner electric range with oven

Electronics

Raymarine Axiom 12 - new in 2023
Raymarine RC 631 Plotter
Raymarine RI 8c radar
Raymarine ST 60 depth, speed and log
Raymarine ST 5000+ autopilot
VHF radio
Dash mounted compass

Disclaimer

The Company offers the details of this vessel in good faith but cannot guarantee or warrant the accuracy of this information nor warrant the condition of the vessel. A buyer should instruct his agents, or his surveyors, to investigate such details as the buyer desires validated. This vessel is offered subject to prior sale, price change, or withdrawal without notice.



