

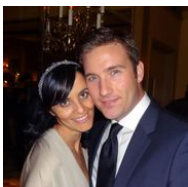
60 ft 2019 Van der Valk BeachClub 600, Lucy Penguin
US\$2,900,000
 Harbor Springs, Michigan, United States

SCHWARTZ & CO.
YACHT SALES



Boat Details

Make:	Van der Valk	Class:	Motor Yacht	Berths:	3
Model:	BeachClub 600	Hull Material:	Aluminum	Heads:	2
Year:	2019	Drive Type:	Pod Drive	Fuel Type:	Diesel
Length:	60 ft	Beam:	19 ft		
Price:	US\$2,900,000	Boat Location:	Harbor Springs, Michigan, United States		
Condition:	Used	Name:	Lucy Penguin		



Michael Schwartz | Schwartz & Co. Yacht Sales

1009 Wexford Drive, Westmont, Illinois, United States

Tel: **312-533-9111**

michael@schwartzco.net

<https://www.schwartzyachts.com>

Description

LUCY PENGUIN, a 60' Van der Valk 2019, was crowned 'Most Innovative Yacht' in her category as part of the World Yachts Trophies in 2019. This is seen in her remarkable amount of interior and exterior space due to the clever location of the engine room, which is found below the swim platform. You'll find various comfortable places to relax and take in the views, whether it's the foredeck entertainment area, the spacious upper deck lounge area, or the expansive swim platform beach club. Bring the outside world in through panoramic views in each of the lounges and suites enhanced by the generous use of glass. This BeachClub 600 was built to US spec, is duty paid, and was kept in the fresh waters of Lake Michigan until October 2022. Also in 2022, she was outfitted with new carpet in the interior and a new hydraulic Freedom Lift on the stern.

MOTIVATED SELLER! WANTS IT SOLD ASAP. \$400,000 PRICE REDUCTION 9/7/2023

Information & Features

Volvo-Penta IPS950 D11 (10.8L, 6-CYL) (Engine 1)

Type:	Inboard	Drive Type:	Pod Drive	Propeller Material:	Alloy
Fuel Type:	Diesel	Power:	725 hp		
Hours:	750	Propeller Type:	6 Blade		

Volvo-Penta IPS950 D11 (10.8L, 6-CYL) (Engine 2)

Type:	Inboard	Drive Type:	Pod Drive	Propeller Material:	Alloy
Fuel Type:	Diesel	Power:	725 hp		
Hours:	750	Propeller Type:	6 Blade		

Dimensions

LOA:	60 ft
Beam:	19 ft
Min Draft:	4 ft 11 in

Weights

Dry Weight:	72,752 lb
-------------	------------------

Tanks

Fuel:	924 gal
Fresh Water:	198 gal
Holding:	132 gal

Accommodations

Double Berths:	1
Twin Berths:	2
Heads:	2

Other

Hull Shape: **Modified Vee**
Designer: **Cor D. Rover**
Builder: **Van der Valk**

Covers

- Bimini Top
- Cockpit Cover

Electrical Equipment

- Shore Power Inlet
- Generator

Electronics

- Depthsounder
- Radar
- Wind Speed and Direction
- Computer
- TV Set
- Navigation Center
- Plotter
- DVD Player
- Autopilot
- Radio
- Compass
- CD Player
- GPS
- Cockpit Speakers
- VHF

Inside Equipment

- Dishwasher
- Bow Thruster
- Washing Machine
- Electric Bilge Pump
- Oven
- Microwave Oven
- Air Conditioning
- Electric Head
- Heating
- Hot Water
- Refrigerator
- Fresh Water Maker
- Deep Freezer
- Battery Charger

Outside Equipment/Extras

- Teak Cockpit
- Cockpit Shower
- Teak Sidedecks
- Gangway
- Davit(s): Freedom Lift
- Cockpit Cushions
- Swimming Ladder

Additional Equipment

- Joystick Control

HULL AND DECK

- Full "premium-quality" aluminum hull and deck and hardtop (special seaworthy shipbuilding, AlMg4.5Mn - H321/H111, with certificate)
- High-quality two-component paint system (Alexseal according to COT norms)
- Hull in metallic paint
- Full 15mm teak decks, also on stairs and swimming platform
- Vast leisure area on the front deck, according to standard GA
- Stainless steel 40mm (316) handrails
- 2x 2 stainless steel (316) cleats aft
- 2 Stainless steel cleats midships
- 2 Stainless steel cleats front deck
- 2 Stainless steel cleats on the swimming platform
- Glass wheelhouse sliding door
- Curved glass beach club/main saloon sliding doors
- Gray tinted and hardened security glass windows
- Teakwood steps on outside stairs
- Outside tables in teak wood
- Luxury exterior sunbrella upholstery (according to layout)
- Cockpit deck sun awning system. Two curved carbon fiber pillars, deck adapters, and canvas awning cover.
- Large watertight entrance/service hatch from the swimming platform to the engine room
- Swissway Golden Gate 1000 hydraulic gangway/passerelle/swimming ladder. One section multifunctional rotating ultra light-weight passerelle that can be used as a gangway, diving board, and swimming ladder. Integrated into the swim platform.
 - 1x Electric anchor winch (Maxwell 3500 HWC port drum 24V 1200W) with 60 kg St. Steel Pool anchor and 60m (10mm) St. steel anchor chain and anchor roll
- Deck wash and anchor wash connection (freshwater)
- Refrigerator, sink, and ice cube maker on the foredeck
- Deck lights incorporated into the hardtop
- LED foot lighting around main decks
- All outside lighting is waterproof
- Underwater transom lights (set of 4 Ocean LED RGB)

INTERIOR

- The entire accommodation of the yacht is thermally insulated
- Layout as per GA's
- Interior style MALLORCA
- Interior fully spray-painted
- Interior built with high-quality solid wooden framework
- Luxury upholstery (brand JAB)
- Escape hatches/possibilities according to CE regulations
- Stainless steel handrails
- Granite worktops in the galley
- Corian worktops in bathrooms
- Corian shower cabins and bathroom/toilet walls
- Solid wooden/Corian floors in the galley and bathrooms/toilets
- Saloon, dining area, galley, and all other cabins are equipped with Cantalupi LED spots
- Internal stairs fitted with LED lights
- LED foot lighting around main decks

GALLEY

- Granite worktops in the galley
- Solid wooden/Corian floors
- Webasto Clear ice cube-making machine (18kg/day capacity)
- Miele wine refrigerator (capacity of 16 bottles)
- 1x Miele refrigerator
- 1x Miele freezer
- 1x Miele ceramic cook top
- 1x Miele extractor fan
- 1x Miele dishwasher
- 1x Miele combination oven
- 1x Quooker instant boiling water tap
- Cantalupi LED spots

ACCOMODATIONS

- Three suites including an owner's suite with panoramic views
- Corian worktops in bathrooms
- Corian shower cabins and bathroom/toilet walls
- Solid wooden/Corian floors in the bathrooms/toilets
- 1x Miele washer/dryer combination
- Cantalupi LED spots
- Shower cabins with security glass doors
- High-quality sanitary equipment

Air Conditioning System:

- Full Tropical "CLION marine" auto-reverse air conditioning system with Delta T of 15 degrees Centigrade. Each cabin and area is separately controllable.

Heating System:

- Diesel heater (Kabola KB40 combi) for hot water system
- Full under-floor heating. The system consists of a fluid-filled tube system, of which the fluid is heated by the Kabola HR-400 Diesel heater inside the engine room

Master Cabin:

- 1x Samsung 32" LED TV with integrated satellite receiver +DVB-T
- 1x Fusion sound system iPod function
- 1x Documents/laptop safe in the master cabin

Guest Cabins:

- 1x Fusion sound system iPod function

ELECTRONICS, COMMUNICATION, AND NAVIGATION

Electric Systems and Components: Vessel monitoring, control, and digital switching system. The ship is provided with a decentralized CAN-bus-based DC power distribution system with the following:

- Electronic fuses
- Membrane panels on the dashboard
- Interior and exterior lighting control, scene programmable
- Switching and control of the navigation lights
- Control and alarm of the bilge pumps
- Control and alarm of the gray water pump
- Switching and control of the freshwater pumps
- Switching and control of the window wipers
- Tank measuring control
- Advanced lighting control
- Dimming functionality for all channels
- Very easy control with manual override possibility

Dashboard Wheelhouse:

- Equipment flush mounted and equipped with foil panels.

Navigation:

- Lighting: 1x Navigation Lopolight system for yachts up to 50 meters
- Maritime computer that can be displayed on the existing navigation screens. Includes a keyboard and mouse.

- Receiver system for Weatherfax and NAVTEX
- Loudhailer

Communication:

- Pepwave Music System:
- Sonos System utilizing JL Amps

Entertainment System:

- Satellite TV system Intellian
- UMTS internet router including WiFi system/yachtrouter mini

BeachClub/Main Saloon:

- 1x Samsung 42" LED TV with integrated satellite receiver +DVBT
- 1x Fusion MultiZone 750 home theater sound system iPod function
- 1x Extension to the cockpit, flybridge, and front deck

Master Cabin:

- 1x Samsung 32" LED TV with integrated satellite receiver +DVB-T
- 1x Fusion sound system iPod function

Guest Cabins & Wheelhouse:

- 1x Fusion sound system iPod function

Navigation Equipment / External Communication:

Wheelhouse:

- 2x Garmin 22" glass cockpit multi-functional monitors
- 1x GMR 24 xHD 4 kW high-definition dome radar AIS System:
- 1x Garmin AIS 600 Blackbox Transceiver - Operating in the VHF maritime band, the Garmin AIS system enables the wireless exchange of navigation status between vessels and shore-side traffic monitoring centers. Commercial ships, oceangoing vessels, and recreational boats equipped with Garmin AIS transmitters broadcast AIS messages that include the vessel's name, course, speed, and current navigation status.

VHF System:

- 1x Garmin VHF300 - Garmin's premium VHF300 radio packs top-of-the-line communications features into a compact, modular design that works with large vessels alike. It includes a full-featured 25-watt VHF radio with Class D Digital Selective Calling (DSC), a full featured loudhailer/foghorn, and an internal multi-station intercom.
- Additional Garmin VHF300 radio

Camera System:

- 1x IP camera, rearview and engine room - Visible on navigation monitors in the wheelhouse.

HELM AND ENGINE ROOM

Propulsion / Steering:

- 2x Volvo Penta D11B2-A MP (IPS 950) - Dynamic Positioning System for Volvo Penta IPS. When activated, the Dynamic Positioning System automatically holds your boat's heading and keeps it within a very limited area. The system uses twin GPS receivers in the special antenna to determine the boat's position and heading.
- Additional Volvo Penta IPS Joystick docking stations, 2pc flybridge, port and starboard
- Joystick driving option
- Outside helm station (steering position) - The outside helm station incorporates the following: helm seat, Volvo Penta control station with joystick (docking), Volvo Penta 12-inch Glass Cockpit multifunctional display, Garmin VHF300 radio, and Volvo Penta autopilot unit.
- Electric trim system (Humphree)
- Humphree electric fin stabilizing system (incl. zero-speed)
- Full Volvo Penta IPS drive system (IPS-20)
- Electric steering system (Volvo Penta IPS-20)
- Volvo Penta EVC-E3 electronic vessel control system
- Electric 24V "Side Power" 20 horsepower bow thruster
- Full-color digital moto management system
- Volvo Penta autopilot

Ship's Systems & Components:

- Automatic fire extinguishing system in the engine room (FirePro Automatic Marine Fire Extinguisher) as well as underneath the steering position plus additional manual fire extinguishers
- The entire engine room is fitted with a system of professional and high-quality sound-dampening materials
- Engine room ventilation system
- Shower cabins with security glass doors
- High-quality sanitary equipment
- 1x Besenzoni manual steering chair

Air Conditioning System:

- Full Tropical "CLION marine" auto-reverse air conditioning system with Delta T of 15 degrees Centigrade. Each cabin and area is separately controllable.

Heating System:

- Diesel heater (Kabola KB40 combi) for hot water system
- Full under-floor heating. The system consists of a fluid-filled tube system, of which the fluid is heated by the Kabola HR-400 Diesel heater inside the engine room.

Fuel System:

- Double diesel filters (Volvo Penta 877770) (2 filters per engine)
- Volvo Lucas filters for Kabola & Genset

Fresh Water System:

- PE water tanks (198 gal)

- Water pump (Gianesshi JET 4B C.E. water pressure system)
- Drinking water disinfection system (Technomar activated carbon UVB2-SD/EPM sterilizer)
- SeaRecovery Aqua Whisper Mini 550 - fresh water maker. The device has a freshwater-making capacity of 23 gallons/hour.

Waste Water System:

- PE waste water tank (132 gal) with extracting possibility and overflow security incl. tank level meter
- Electric toilets/bidets (planus)
- Gray/black water pump (Gianesshi waste pump MV 44G 24V / 13 gal/min)
- Shower pumps

Bilge System:

- 4x Automatic bilge pumps (3698 gal/hour) (Jabsco 3500)
- 1x Manual bilge pump (Jabsco Ocean Warrior)

Generator:

- 1x Northern Lights sound damped 1500 rpm 16 kW 230 Volt AC

Other:

- All other used materials and components such as plumbing materials, valves, (weed) filters, cables, couplings, fittings (etc.) are professional and top-quality and according to all classification demands. • The ship is built and approved according to classification CE-class A (Ocean).

ELECTRICAL SYSTEMS

Battery Sets:

- 12x 2 Volt 582 Ah/type GEL (service batteries)
- 2x 24 Volt 160 Ah/type AGM (main engines)
- 1x 12 Volt 90 Ah/type AGM (generator)

Chargers:

- 1x Mastervolt 24V 100 Amp (for service batteries)
- 1x Mastervolt 24V 40 Amp (for engine batteries)
- 1x Mastervolt 12V 10 Amp (for genset battery)

Inverter:

- 1x 4 kW Inverter 24/230V

Shore Power Connection:

- 2x230V 50 Amp shore connection, including 50 Amp isolation transformer

Switch Panels 230V:

• Switch panels have been equipped with "double pole" fuses and where necessary with an "earth fault" and an "engine protection system". The switching between shore, generators, and inverter are fully automatic and "foolproof". A 230 V indication and monitoring system is mounted at the steering position.

Switch Panels 24V:

• The main switchboard is mounted in the engine room and is equipped with "double pole" fuses and where necessary with the engine security switches. A 24 Volt DC indication and monitoring system is installed at the steering position.

Ship's Protection:

• The ship is equipped with an earth fault detection system. Should the ship find itself in an "electrically polluted" environment then the system will indicate this.

Cable System:

• Only professional connectors have been used. Cables are heat resistant up to 158 degrees Fahrenheit and have separate fuses.

Sensors:

- 1x GPS sensor
- 1x Depth/speed sensor
- 1x Wind sensor

MECHANICAL SYSTEMS

Propulsion / Steering:

- 2x Volvo Penta D11B2-A MP (IPS 950) - Dynamic Positioning System for Volvo Penta IPS. When activated, the Dynamic Positioning System automatically holds your boat's heading and keeps it within a very limited area. The system uses twin GPS receivers in the special antenna to determine the boat's position and heading.
- Additional Volvo Penta IPS Joystick wing stations, 2pc. flybridge, port and starboard
- Joystick driving option
- Outside helm station (steering position) - The outside helm station incorporates the following: helm seat, Volvo Penta control station with joystick (docking), Volvo Penta 12-inch Glass Cockpit multifunctional display, Garmin VHF300 radio, and Volvo Penta autopilot unit.
- Electric trim system (Humphree)
- Humphree electric fin stabilizing system (incl. zero-speed)
- Full Volvo Penta IPS drive system (IPS-20)
- Electric steering system (Volvo Penta IPS-20)
- Volvo Penta EVC-E3 electronic vessel control system
- Electric 24V "Side Power" 20 horsepower bow thruster
- Full-color digital moto management system
- Volvo Penta autopilot

Ship's Systems & Components:

- Automatic fire extinguishing system in the engine room (FirePro Automatic Marine Fire Extinguisher) as well as underneath the steering position plus additional manual fire extinguishers
- The entire engine room is fitted with a system of professional and high-quality sound-dampening materials
- Engine room ventilation system
- Shower cabins with security glass doors
- High-quality sanitary equipment
- 1x Besenzoni manual steering chair
- 1x Documents/laptop safe in the master cabin

Air Conditioning System:

- Full Tropical "CLION marine" auto-reverse air conditioning system with Delta T of 15 degrees Centigrade. Each cabin and area is separately controllable.

Heating System:

- Diesel heater (Kabola KB40 combi) for hot water system
- Full under-floor heating. The system consists of a fluid-filled tube system, of which the fluid is heated by the Kabola HR-400 Diesel heater inside the engine room.

Fuel System:

- Double diesel filters (Volvo Penta 877770) (2 filters per engine)
- Volvo Lucas filters for Kabola & Genset

Fresh Water System:

- PE water tanks (198 gal)
- Water pump (Gianesshi JET 4B C.E. water pressure system)

- Drinking water disinfection system (Technomar activated carbon UVB2-SD/EPM sterilizer)
- SeaRecovery Aqua Whisper Mini 550 - fresh water maker. The device has a freshwater-making capacity of 23 gallons/hour.

Waste Water System:

- PE waste water tank (132 gal) with extracting possibility and overflow security incl. tank level meter
- Electric toilets/bidets (planus)
- Gray/black water pump (Gianesshi waste pump MV 44G 24V / 13 gal/min)
- Shower pumps

Bilge System:

- 4x Automatic bilge pumps (3698 gal/hour) (Jabsco 3500)
- 1x Manual bilge pump (Jabsco Ocean Warrior)

Generator:

- 1x Northern Lights sound damped 1500 rpm 16 kW 230 Volt AC

Other:

- All other used materials and components such as plumbing materials, valves, (weed) filters, cables, couplings, fittings (etc.) are professional and top-quality and according to all classification demands.
- The ship is built and approved according to classification CE-class A (Ocean).

DISCLAIMER

The Company offers the details of this vessel in good faith but cannot guarantee or warrant the accuracy of this information nor warrant the condition of the vessel. A buyer should instruct his agents, or his surveyors, to investigate such details as the buyer desires validated. This vessel is offered subject to prior sale, price change, or withdrawal without notice.







