

41 ft 2020 American Tug 395, Michael Jay

US\$795,000

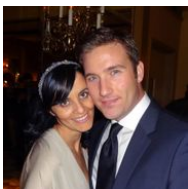
Stuart, Florida, United States

SCHWARTZ & CO.
YACHT SALES



Boat Details

Make:	American Tug	Class:	Tug	Cabins:	2
Model:	395	Hull Material:	Fiberglass	Berths:	1
Year:	2020	Drive Type:	Direct Drive	Heads:	1
Length:	41 ft 6 in	Beam:	13 ft 3 in	Fuel Type:	Diesel
Price:	US\$795,000	Boat Location:	Stuart, Florida, United States	Max Draft:	3 ft 5 in
Condition:	Used	Name:	Michael Jay		



Michael Schwartz | Schwartz & Co. Yacht Sales

1009 Wexford Drive, Westmont, Illinois, United States

Tel: **312-533-9111**

michael@schwartzco.net

<https://www.schwartzyachts.com>

Description

Michael Jay is a wonderful opportunity to own a "like new" boat without the wait time to order a new boat. She is so new she still has several years left on her manufacturer hull warranty. The American Tug 395 is a very popular model and quite rare on the brokerage market. Michael Jay was built with many popular factory options like the stern thruster, entertainment package, sapele & maple flooring, upgraded navigation electronics, deck crane and of course a very popular flybridge option. She is available only because her owners are moving up to a larger Kadey-Krogen. Her 27' height is easily reduced to 14' 7" with her arch and bimini lowered for those fixed bridges you come across while cruising. Come and see why the 395 is a great boat for coastal cruising and doing the Great Loop.

Information & Features

Volvo Penta D6-435 (Engine 1)

Type:	Inboard	Drive Type:	Direct Drive	Propeller Material:	Bronze
Fuel Type:	Diesel	Power:	435 hp		
Hours:	1447	Propeller Type:	4 Blade		

Dimensions

LOA:	41 ft 6 in	Beam:	13 ft 3 in
Length On Deck:	38 ft 6 in	Max Bridge Clearance:	14 ft 7 in
LWL:	37 ft	Max Draft:	3 ft 5 in

Weights

Dry Weight:	25,000 lb
-------------	------------------

Tanks

Fuel:	400 gal
Fresh Water:	120 gal
Holding:	45 gal

Accommodations

Single Berths:	1
Cabins:	2
Heads:	1

Other

Hull Shape:	Semi Displacement
-------------	--------------------------

Pilothouse

The pilothouse is up three steps from the saloon/galley area. It features a 360° view with 6 opening windows (with screens) and 2 watertight doors. It features:

- Ultra leather seating for four w/ electric sliding helm seat
- Storage drawers under seats
- Overhead console
- Intermittent windshield wipers
- Chart storage compartment
- Four hand grabrails
- Red lights over chart table for night navigation

Saloon

The saloon is entered through a single watertight door off the aft deck. It features a large L-shaped settee to port with adjustable pedestal table. Entertainment is provided through a stereo system with AM/FM/Bluetooth capability and a pull down 24" TV over the galley counter. There are 5 double size opening windows with screens and pleated shades and a small non-opening window aft. The Sapele and Maple floors give a warm feel through-out the boat.

Galley

The galley is on the starboard side of the boat opposite the settee. The 360° view makes it a dream to work in. It is L-shaped with storage below. It features:

- Force 10 propane stove that was upgraded to full stove and oven w/ broiler
- Upright Nova Kool refrigerator/freezer
- Microwave oven above refrigerator (new 2/24)
- Solid surface countertop with stainless double sink
- Ample drawers and storage cabinets

Guest Stateroom

The guest stateroom is forward and starboard down from the pilothouse. There is a double berth and storage as well as two portholes to provide light and ventilation.

Master Stateroom

The master stateroom is in the bow forward and down from the pilothouse. It features a center island queen berth with 4 drawers under the bed. There is a cedar lined hanging locker to starboard and a locker with shelf to port.

There are reading lights for the berth as well as three way switching for the overhead lights. Two round stainless steel ports with screens and an Ocean Air Sky Screen for the Boma hatch keep things light and airy.

Head

The head is opposite the guest stateroom to port. It features:

- Electric fresh water 12 v toilet
- Vanity w/storage & mirrors
- Solid Surface countertop w/ under mount stainless sink
- Large fiberglass tall shower w/ glass door
- Sapele & Maple sole
- Two round stainless steel ports w/ screens

Electronics

- Three Garmin 8612xsv Chartplotters w/Volvo-Penta Glass Cockpit and Active Captain (two at pilothouse helm and one at flybridge helm)
- Garmin GMR Fantom 24 Radar
- Two Garmin GHC 20 Autopilot Controls (one at pilothouse helm and one at flybridge helm) Garmin GRF 10 Autopilot Rudder Sensor
- Garmin Reactor 40 Autopilot Compass
- Simrad Autopilot Pump
- Garmin 800 AIS, send and receive (new in 2022)
- Garmin GMI 20 Multifunction Instrument
- Garmin gWind Wind Speed and Angle Instrument
- Garmin VHF 210 AIS Series (pilothouse)
- Garmin GHS II VHF (flybridge)
- Dual Shakespeare Phase III Antennas
- Airmar B60 Depth and Temperature Sensor
- Airmar DST800V Smart TRIDUCER Multisensor Depth, Speed and Temperature
- Sensor Garmin GPS 19x NMEA 2000 GPS Receiver
- Garmin GND 10 Black Box Bridge
- Garmin GMS 10 Network Port Expander
- ACR spot light w/ fixed and remote hand held remote control (2022)
- Wave brand Tidal Wave cell & wifi booster (2022)
- Siren remote monitoring system for batteries, high water, entry & shore power (2022)

Mechanical

- Volvo D6-435 hp (1447 hours)
- ZF 220 gear w/ 3.0:1 ratio
- 6KW Northern Lights generator with sound shield (861 hours)
- Side-power 8hp twin prop bow thruster w/ joystick control w/ remote
- Side-power 6hp stern thruster w/ joystick control w/ remote
- Dock Mate thruster and engine remote controls (2022)
- Stainless steel prop shaft w/ dripless shaft seals
- Bronze 4 blade propeller class "S"
- Razor shaft line cutter
- Composite rudder & skeg
- Wet underwater exhaust system
- Seawater strainers for main & genset
- Racor filter for genset
- Dual Racor filters for main engine
- Oil changing system
- Automatic water pressure system
- Webasto Isotherm water heater
- Sound deadening
- Electronic shift and throttle system
- Three 2000 gph bilge pumps w/ automatic float switches
- Waste discharge system w/ macerator

Electrical

- Remotely controlled battery switches
- Breaker panel w/ backlighting
- Battery combiner system for charging
- Three 4D Lifeline AGM batteries for house (new 8/23)
- One 4D AGM battery for main engine start
- One 8D AGM battery for bow thruster
- One group 24 battery for generator start
- 2000 watt inverter/charger
- Two 30 amp shore power service w/ Smart Plug cords and inlets
- Electric defroster system
- Pilothouse windows International navigation lights LED type
- All LED lighting throughout boat

Additional Components

- Sapele paneling in pilot house
- Sapele valances in salon & pilothouse
- Cabinets trimmed in solid Sapele
- Overhead & walls in marine grade vinyl
- High quality carpet & padding
- 1000w electric heater in salon
- 750w electrical heater in master stateroom
- 28,000 btu, reverse cycle heat/air-conditioning system (3 Zone)
- Stainless Edson helm wheel
- Hydraulic pump & cylinder
- Integral rudder port w/ bearing & dripless seal
- 1-1/2" waste & water fittings
- 2" fuel fills
- 316 stainless steel 1-1/4" bowrails w/stainless steel burgee mast
- Steelhead Marine WD 600 Dinghy Crane
- 9'6" AB RIB w/ a 15hp Suzuki, Electric Start, Battery, Bilge Pump, and Custom Cover Matching Bimini, Dash Canvas, and Complete Helm Cover
- 316 stainless steel sundeck rails & ladder
- Seawater wash down system in bow
- Swim platform w /stainless steel edge guard six stainless steel fender cleats
- Shore inlets in cockpit
- Molded fiberglass deck box on bow
- Molded fiberglass faux smoke stack
- Four portable fire extinguishers
- Four fenders & mooring lines
- 44lb anchor
- Eight stainless steel mooring cleats
- Auto fire extinguisher in engine room w/ auto engine & generator shut-down
- Lofrans Tigres anchor windlass 1500 w/ /275'ofS/16" H.T. galvanized chain
- Ships bell
- 10-year ltd warranty(workmanship/blisters) Solid hull laminate
- Black anti-fouling paint (two coats)
- Boot stripe
- Molded composite skeg protects props & supports rudder
- Stainless steel bow roller assembly
- Color matched powder coated aluminum framed windows & sliding & hinged doors
- Numerous spares

Disclaimer

The Company offers the details of this vessel in good faith but cannot guarantee or warrant the accuracy of this information nor warrant the condition of the vessel. A buyer should instruct his agents, or his surveyors, to investigate such details as the buyer desires validated. This vessel is offered subject to prior sale, price change, or withdrawal without notice.









