

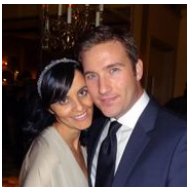
52 ft 2016 Kadey-Krogen 52, Privateer  
**US\$1,795,000**  
 Stuart, Florida, United States

**SCHWARTZ & CO.**  
 YACHT SALES



**Boat Details**

Make:	<b>Kadey-Krogen</b>	Class:	<b>Trawler</b>	Heads:	<b>2</b>
Model:	<b>52</b>	Hull Material:	<b>Fiberglass</b>	Fuel Type:	<b>Diesel</b>
Year:	<b>2016</b>	Drive Type:	<b>Direct Drive</b>	Max Draft:	<b>4 ft 6 in</b>
Length:	<b>52 ft</b>	Beam:	<b>17 ft 3 in</b>		
Price:	<b>US\$1,795,000</b>	Boat Location:	<b>Stuart, Florida, United States</b>		
Condition:	<b>Used</b>	Name:	<b>Privateer</b>		



**Michael Schwartz | Schwartz & Co. Yacht Sales**

1009 Wexford Drive, Westmont, Illinois, United States

Tel: **312-533-9111**

michael@schwartzco.net

<https://www.schwartzyachts.com>

## Description

At Home on any sea. Although the Krogen 52' is the perfect blend of capability, beauty and comfort in a truly functional design. Privateer has been home to her owners and has summered in Newport, RI and wintered in the Bahamas every year. She is very well equipped for cruising and has been lovingly maintained by her owners who have had her since new.

## Information & Features

### 2016 John Deere Tier III 4045TFM85 (Engine 1)

Type:	<b>Inboard</b>	Drive Type:	<b>Direct Drive</b>	Propeller Material:	<b>Bronze</b>
Fuel Type:	<b>Diesel</b>	Power:	<b>125 hp</b>		
Hours:	<b>3750</b>	Propeller Type:	<b>4 Blade</b>		

### 2016 John Deere Tier III 4045TFM85 (Engine 2)

Type:	<b>Inboard</b>	Drive Type:	<b>Direct Drive</b>	Propeller Material:	<b>Bronze</b>
Fuel Type:	<b>Diesel</b>	Power:	<b>125 hp</b>		
Hours:	<b>3750</b>	Propeller Type:	<b>4 Blade</b>		

## Dimensions

LOA:	<b>57 ft 9 in</b>	Beam:	<b>17 ft 3 in</b>
Length On Deck:	<b>52 ft 8 in</b>	Max Bridge Clearance:	<b>26 ft</b>
LWL:	<b>47 ft 6 in</b>	Max Draft:	<b>4 ft 6 in</b>

## Weights

Ballast:	<b>5,300 lb</b>
Displacement:	<b>70,000 lb</b>

## Tanks

Fuel:	<b>1,400 gal Aluminum</b>
Fresh Water:	<b>400 gal Stainless Steel</b>
Holding:	<b>1 x 140 gal GRP</b>

## Accommodations

Heads:	<b>2</b>
--------	----------

## Other

Hull Shape:	<b>Displacement</b>
Flag Of Registry:	<b>United States</b>
Builder:	<b>Kadey Krogen Yachts</b>

## Construction

- Hull and superstructure molds from high-grade female tooling.
- Hull construction includes use of USA-made, Cook® gel coat. Hand-Laid Knytex® fiberglass construction with closed-cell PVC sandwich core used in topsides. Solid fiberglass below waterline with blister-resistant vinylester resin utilized on first two laminates below the waterline, with aramid fiber/FRP reinforcements.
- Superstructure includes Knytex® and mat (in combination with Corecell® cores) and surface mats for print-through reduction.
- Teak aft and side deck. Boat and fore decks have GripTex® non-skid finish. Bulwark has molded plank lines with gel coat finish.
- Polyurethane formulated marine sealants used at hull-to-deck, boat deck joints and exterior fittings.
- Marine-grade plywood bulkheads with molded fiberglass hat section stringers.
- Interior finished with handcrafted solid teak and veneers.

## Saloon

The roomy saloon is entered from the large covered teak aft deck through two welded aluminum weathertight doors complete with retractable screen door. To starboard is a comfortable U-shaped settee with storage below with a cherry hi-lo table w/ stainless steel anchors for when at sea. The table can be used either as a coffee table or large dining table seating up to 8 people. To port there are two very comfortable Ekorness Stressless power recliners.

Forward of this area is a book case/bar area. For entertainment there is a 48" Samsung UHD Smart TV on a lift on the starboard side behind the settee. There is also a Samsung CD/Blu-Ray player and Apple TV (5th generation 2020). There are 5 large opening windows with custom shades and valences that keep the room bright and airy.

## Galley

The galley is forward on the starboard side of the saloon and is open to the saloon but separated by a custom granite counter and backsplash. This galley is more open than any other 52' though as the normal overhead cabinets over the sink were never put in. Instead the refrigerator and freezer were changed to Sub Zero drawer units and that provided more storage on the forward bulkhead. The Sub Zeros are also way more efficient for living on the hook.

There is additional access to the galley from the outside covered side deck through a welded aluminum Dutch door to make provisioning a breeze. A cherry and ash floor keep the galley bright and give it a warm feel.

Major components in the galley include:

- Sub Zero drawer refrigerators and freezers (2 each)
- GE® microwave/convection oven
- Blue Star 4 burner stove/oven
- GE® Dishwasher
- Elkay® Stainless steel double basin galley sink with Grohe® faucet
- Slide out double trash bin for recycling convenience
- Pantry across from galley for easy access to storage

## Master Stateroom

The master stateroom is forward to take full advantage of the full width of the yacht. The master berth is a custom size that is King width where it matters and is 7' long for taller sleepers. There are 4 large stainless steel opening ports and 2 overhead hatches with Oceanair Skyscreen and shades that make the room feel large, bright and airy.

For an added breeze there are two fans in this room. There are multiple large drawers for storage under the berth as well as additional storage accessed via a pneumatic lift for the bed mattress. There is one large hanging locker and one large closet as well as a 7 drawer dresser with custom LED lighting.

## Ensuite Head

The ensuite head is on the aft port side of the master stateroom. There is a stall shower with glass door and molded seat, 2 mirrored medicine cabinets, granite topped vanity and Grohe fixture, household size Dometic porcelain freshwater toilet additional mirror and linen storage. There are two large opening stainless steel ports above the vanity and in the shower for plenty of light and ventilation.

## Starboard Guest Stateroom

The guest stateroom is to starboard and aft of the master. It features a walk around Queen bed centered in the room with drawers underneath. The berth also lifts up to access storage under the bed as well. There are two oversized opening portholes to provide light and ventilation.

## Guest Ensuite Head

The Guest Head is located forward of the guest stateroom and is an ensuite head. The head features a separate shower stall with glass door and molded seat. There is a stainless steel opening port in the shower stall for natural light and ventilation. The counter for the sink is granite and there is a household sized Dometic head.

## Port Guest Stateroom

The port guest stateroom is located on the port side forward and down from the galley and saloon. It features a large comfortable settee here that pulls out to accommodate additional guests so the space becomes an open stateroom when needed. For needed privacy there is a recessed track in the ceiling with a curtain that can be closed for privacy to the companionway. This allows the area to remain bright, airy and open till needed as a stateroom. For storage there are drawers under the berth as well as end table on either end of the settee with drawers for storage. For additional berthing there is a short Pullman berth on the forward bulkhead that is wonderful for kids. It does also double as a pull-down luggage storage area when you have guests aboard. There are two large stainless steel ports with that keep the area bright and airy and with the LED lights overhead provide just the right about of light. Forward of this area in the companionway behind vented cherry doors are a Bosch stack washer/dryer unit.

## Pilothouse and Electronics

The pilothouse is up a few steps from the saloon and galley and is truly the center of activity when underway. Two LeBroc helm chairs w/ joystick control keep the captain and mate together underway. An Ultraleather L-shaped settee is behind the helm. With its mounted folding pedestal table it is the perfect place for a relaxing dinner or even for a second office space. This settee also converts to a double watch berth if needed. Welded aluminum Dutch doors port and starboard allow for easy access to all decks. The pilothouse offers great ventilation via an extra large stainless steel opening port looking aft and 2 opening side windows. Stepping out of the port side pilothouse door leads to either boat deck/flybridge area or to the Portuguese bridge deck. There are ship's control stations with covers on both port and starboard corners of the Portuguese bridge making docking in any location easy.

- (2) Furuno TZTBB black box navigation units
- Furuno Digital DRS6A NXT 72 nautical mile open array radar (2021)
- Furuno NavPilot 711C Auto Pilot
- Furuno NavPilot 7021 handheld remote display
- Green Marine 24" Touch screen display (primary nav)
- Green Marine 19" Touch screen display (secondary nav and radar)
- Pelco 17" Monitor w/ quad video switch for camera monitor and network control
- (2) Furuno GP330B GPS/WAAS
- (2) Furuno DST800 Speed/depth/temp transducers for showing port and starboard depth
- Furuno DFF1 depth sounder
- (3) Furuno Fi70 display (2021)
- Furuno MCU004 remote control mounted to PH helm chair
- Furuno 200WX Wind/weather sensor
- Furuno AIS, class B+ (2022)
- Fusion UD750 stereo w/ Sirius/XM receiver
- ICOM IC-M506 VHF w/ hailer
- ICOM Command mic for flybridge VHF
- Apple Mac mini (2021)
- Wave EC-HP WiFi w/ external antenna
- Wilson Electronics cellular amplifier
- Starlink internet system (2022)
- (1) engine room cameras, (2) Aft Deck Camera & (1) mast rear camera
- Hydraulic Bow & Stern Thrusters
- ABT Trac Stabilizers
- High water alarm
- Kahlenberg Air Horns
- Maxwell windlass controller with digital chain counter
- Maxwell AA710 wireless remote windlass controller
- Remote panel for SeaFire extinguisher
- Exalto intermittent wipers with washers
- Grey & black waste water tank tenders

- Ritchie compass
- Rudder angle indicator
- Engine Raw water exhaust overtemp alarm
- Bilge high water alarm (5 bilges)
- Celectron Bilge pump activity monitor
- Hurricane Hydronic Heater system controls

## **Fly Bridge**

The fly bridge is equipped with dual LeBroc helm chairs and a fiberglass table. The settee has custom Sunbrella cushions. The Sunbrella Bimini also includes side and aft roll down sun shades. Behind the helm area on the flybridge is the summer kitchen equipped with a SeaStar propane BBQ, freshwater spigot and stainless sink w/ hot and cold water & storage lockers. There are also two 20# aluminum propane tanks.

- Furuno TZ Touch 14" plotter
- Furuno NavPilot 711C auto pilot display
- (2) Furuno FI70 displays for port and starboard depth readout
- ICOM IC-M604 VHF w/ hailer
- ICOM Command mic for pilothouse VHF
- Remote panel for ABT stabilizers
- John Deere and ZF engine controls
- Bow thruster controls
- Maxwell windlass control with chain counter
- High water alarm
- Remote panel for SeaFire extinguisher
- Rudder angle indicator
- Poly-Planar speakers

## Entertainment & Networking

- Samsung 48" UND Smart TV in saloon
- UPS battery back up for TV
- Apple TV (5th Gen)(2021)
- Samsung CD Player
- (2) Fusion UD750 stereo radio in PH and Saloon with speakers in PH, Saloon, Cockpit and Flybridge
- SiriusXM tuner with remote antenna
- Packedge switch, wireless controller and WAN w antennas in saloon and PH
- UPS battery back up for network
- Wave EC-HP WIFI Booster
- Wilson Cellular booster w/ (2) antennas
- Delta 12M broadcast TV antenna
- Starlink satellite internet (second generation RV system)
- TV Cable outlets, bow and stern
- MAC Mini with wireless mouse and keyboard(2021)

## Engine Room and Machinery

- Twin Tier III John Deere 4045TFM85 125 hp with ZF Marine 2.917:1 ratio gear (3900 hours)
- Northern Lights® 12KW generator with sound shield & PTO for hydraulics (1190 hours)
- Remote start for Northern Lights in engine room(2022)
- Backup electric hydraulic oil cooling pump (2019) (main pump replaced 2020)
- Northern Lights® generator water exhaust separator
- Racor engine CCV filters
- ABT Hydraulic stabilizers
- ABT® 25hp hydraulic bow thruster- controls at all 4 stations
- ABT® 15hp hydraulic stern thruster- controls at all 4 stations
- ESI CFS1000FR fuel polisher
- Reverso® oil change system plumbed to both engines, transmissions and generator
- Lube oil tank (15 gallon) added for storage plumbed into oil change system
- Sea Fire® automatic fire suppression system
- Dual Racor® 900 fuel filters w/ vacuum gauges for main engines
- Dual Racor® 500 fuel filters w/ vacuum gauge for generator
- Glending Cablemaster w/ 75' of shore power cable
- Balmar Hi-Output alternators (190 amp)
- Wakespeed WS500 external regulators for alternators (2022)
- Manship engine room blowers w/moisture eliminators and variable hi-speed fans
- ZF Mathers Cruise Command (4-station) engine controls
- Teleflex hydraulic steering (2 stations)
- Raritan 20 gallon water heater
- Dual fresh water pumps, one Johnson Aquajet Duo 24VDC and one Headhunter Mach 5 120 VAC
- (2) Jabsco dockside pressure regulators (replaced 2022)
- (5) Rule bilge pumps @3,700 gallons per hour with Ultra high water alarm (2 station)
- Emergency bilge pump tied into raw water intake on main engine
- Rule portable emergency bilge pump (12 volt)
- Centek fiberglass muffler
- (4) aluminum fuel tanks with sight gauges for 1,400 gallon total capacity
- Fiberglass 140 gallon tank w/ macerator (black water)
- Fiberglass 140 gallon tank w/macerator (grey water)
- Fireboy Xintex CO detectors
- (2) 316L Stainless steel water tanks for 400 gallon total capacity
- Whole boat water filtration system w/ carbon filter



## Electrical

- Northern Lights® 12KW generator with sound shield (1012 hours)
- Genset remote start added (2022)
- Mastervolt 4000 watt inverter/charger (100 amp)
- Mastervolt 3000 watt back up inverter (2022)
- (2) Mastervolt 100 Amp battery chargers (total 300 Amp house bank charging capacity)
- (2) Mastervolt DC/DC converters for charging engine start batteries
- Mastervolt charger for generator battery
- (4) Solbain 165watt solar panels on pilothouse roof (2020)
- 240 volt Charles Isolation Transformer
- Nauti-Tec shore power auto boost controller (2020)
- Glendenning Cablemaster w/ 75' of shore power cable
- 50' EEL 50 A 125/250V cable for 50A bow receptacle
- 50' 30A 125V cable for 30A receptacle in cockpit
- Multiple power adapters, "Y" adapter and reverse "Y" adapter
- Additional shore power inlets: 50A bow and 30A stern
- Lighting protection system (2019)
- Batteries:
  - Firefly carbon foam batteries for house bank, 900 amp hours @24 volt, (12) 4V/450AH (installed in 2020)
  - Lifeline AGM 92, 12-volt wired in series for 24V DC engine starting
  - Lifeline AGM 12v start battery for generator
- Battery bank switch
- Battery combiner for emergency engine start

## Additional Components

- Parker Village Marine Stowaway model STW-800 800 gpd water maker (membranes replaced 2022)
- Glendenning shore power retrieval system
- i2 Systems LED lighting throughout
- All exterior lighting is LED
- CruiseAir reverse cycle AC/Heat units - remote mounted compressors equipped with their SMXHT control panels throughout
- Hurricane H2E 35,000 BTU diesel hydronic heater w/ output in every cabin
- Multiple Caframo 24 volt fans throughout boat interior for ventilation
- (2) Maxwell hydraulic vertical windlasses w/ wildcat and gypsy (serviced in 2022)
- PYI drip-less shaft seals (replaced 2021)
- Cutlass bearings replaced 2021
- Props and shafts reconditioned & prop shaft collars upgraded to tapered shafts in 2021
- Steelhead ES1000 electric hydraulic davit system w/ power rotation (cable replaced 2021)
- (2) Maxwell anchor remote control stations with chain counter at pilothouse and flybridge
- Vulcan 55 121lb anchor with 300' 7/16" G4 chain
- Fortress F80 anchor w/ 100' 7/16" G4 chain & 300' 7/8" nylon rode
- Fiorentino Sea Anchor, 18' offshore w/ 300' of 3/4" deployment line
- Heavy duty towing bridle
- At-Anchor Flopper Stoppers
- Viking 6 person valise life raft, Model 6UKCL (repacked in 2022)
- Freeman watertight deck hatch color matched to deck gelcoat for anchor locker
- Bow shore power inlet
- Custom canvas covers for windows and flybridge
- LED Flybridge and Boat Deck Lighting
- (2) 20lb aluminum propane tanks
- Fresh and Saltwater wash downs
- Whole boat water filter system
- Custom Sunbrella exterior seating cushions
- Cockpit shower
- Armstrong 4 step pull out dive ladder
- (3) Stern staples
- Bottom painted 2022
- Stabilizer and thrusters received their 5 year service in 2022
- John Deere engine coolant system serviced and flushed in 2022
- Raw water pumps on both John Deeres and Northern Lights replaced in 2022

## **Exclusions**

Owner's personal effects, artwork and tools.

AB VSX RIB inflatable and 30 hp Yamaha outboard.

## **Disclaimer**

Potential purchasers should assume that any items on the vessel at the time of viewing, but not specifically listed on this specification sheet, are not included with the sale of the yacht. These specifications are believed to be correct but cannot be guaranteed. Data was obtained from sources believed reliable but is not guaranteed by owner or brokers. Engine hours are approximate, may be reported verbally by the seller, and are recorded at the time and date of the original listing of this vessel. Owner's use during the time of this listing may affect the total engine hours upon a prospective buyer's inspection. Buyer assumes responsibility to verify all speeds, consumptions, capacities and other measurements contained herein and otherwise provided, and agrees to instruct his/her agents or his/her surveyor to confirm such details prior to purchase. This vessel is subject to sale, price and inventory changes or withdrawal from market without notice.













