

52 ft 2016 Kadey-Krogen 52, Blue Note

**US\$1,895,000**

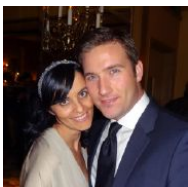
Stuart, Florida, United States

**SCHWARTZ & CO.**  
YACHT SALES



### Boat Details

Make:	<b>Kadey-Krogen</b>	Class:	<b>Trawler</b>	Heads:	<b>2</b>
Model:	<b>52</b>	Hull Material:	<b>Fiberglass</b>	Fuel Type:	<b>Diesel</b>
Year:	<b>2016</b>	Drive Type:	<b>Direct Drive</b>	Max Draft:	<b>4 ft 6 in</b>
Length:	<b>52 ft</b>	Beam:	<b>17 ft 3 in</b>		
Price:	<b>US\$1,895,000</b>	Boat Location:	<b>Stuart, Florida, United States</b>		
Condition:	<b>Used</b>	Name:	<b>Blue Note</b>		



**Michael Schwartz | Schwartz & Co. Yacht Sales**

1009 Wexford Drive, Westmont, Illinois, United States

Tel: **312-533-9111**

michael@schwartzco.net

<https://www.schwartzyachts.com>

## Description

Blue Note was originally designed by pair of engineers (Father & Son) whom spared no expense or attention to detail to ensure she can go anywhere. They completed the American Great Loop in 2018, logging almost 6000 miles and then decided to build a larger Krogen. Blue Note's current owners bought her a little over a year ago but have now also decided to have us build them a larger Krogen. With her bow and stern thrusters, twin screws, plus this boat is controllable from multiple locations it makes docking, locking, anchoring incredibly easy.

Wanting to travel in comfort the owners of this vessel opt'd for two gensets and 5 air conditioning systems. The bigger genset can handle all 5 AC systems running while leisurely traveling long anywhere on a hot summer day. For night time comfort running the smaller genset will help fuel economy while keeping up to 3 AC systems running. Both staterooms have big flat screen TV's and the main Salon features a retractable 42" Flat screen with integrated Sonos Soundbar for surround sound movie entertainment or soft soothing music while you dine in the main salon or alfresco on the aft deck. Living in this always connected world Blue Note includes a whole boat WiFi System with a Range Extender enabling it to stay connected miles away from a WiFi hotspot. The Flybridge has the very popular hard top option that makes piloting the boat or entertaining so much fun with the intense sun/heat typically found in tropical climates.

Maintenance is a breeze in this walk about engine room. With both engines and gensets interconnected to a Reverso Oil Management system, changing the oil is as simple as opening a valve and pumping the old oil out and new oil in. Air filters and oil filters are easily reached for replacement AND the engine room features a custom workbench making for a great place to open/rebuild any other component that needs to be worked on. Fuel management is a breeze with BiG sight gauges on each fuel tank and a fuel transfer/polishing system to keep your fuel clean and ready to use. A custom designed autofill system makes taking on freshwater into Blue Notes's tanks as simple as pushing a button which starts the fill process and then automatically stops once the tanks are full. No longer do you have to fuss with freshwater fill plates, sticking a hose, in and waiting for the tank to fill up.

## Information & Features

### 2016 John Deere Tier III 4045TFM85 (Engine 1)

Type:	<b>Inboard</b>	Drive Type:	<b>Direct Drive</b>	Propeller Material:	<b>Bronze</b>
Fuel Type:	<b>Diesel</b>	Power:	<b>125 hp</b>	Rope Cutter:	<b>true</b>
Hours:	<b>1925</b>	Propeller Type:	<b>4 Blade</b>		

### 2016 John Deere Tier III 4045TFM85 (Engine 2)

Type:	<b>Inboard</b>	Drive Type:	<b>Direct Drive</b>	Propeller Material:	<b>Bronze</b>
Fuel Type:	<b>Diesel</b>	Power:	<b>125 hp</b>	Rope Cutter:	<b>true</b>
Hours:	<b>1925</b>	Propeller Type:	<b>4 Blade</b>		

### Dimensions

LOA:	<b>57 ft 9 in</b>	Beam:	<b>17 ft 3 in</b>
Length On Deck:	<b>52 ft 8 in</b>	Max Bridge Clearance:	<b>26 ft</b>
LWL:	<b>47 ft 6 in</b>	Max Draft:	<b>4 ft 6 in</b>

## Weights

Ballast: **5,300 lb**  
Displacement: **70,000 lb**

## Tanks

Fuel: **1,400 gal Aluminum**  
Fresh Water: **400 gal Stainless Steel**  
Holding: **1 x 140 gal GRP**

## Accommodations

Heads: **2**

## Other

Hull Shape: **Displacement**  
Flag Of Registry: **United States**  
Builder: **Kadey Krogen Yachts**

## Construction

- Hull and superstructure molds from high-grade female tooling.
- Hull construction includes use of USA-made, Cook® gel coat. Hand-Laid Knytex® fiberglass construction with closed-cell PVC sandwich core used in topsides. Solid fiberglass below waterline with blister-resistant vinylester resin utilized on first two laminates below the waterline, with aramid fiber/FRP reinforcements.
- Superstructure includes Knytex® and mat (in combination with Corecell® cores) and surface mats for print-through reduction.
- Teak aft and side deck. Boat and fore decks have GripTex® non-skid finish. Bulwark has molded plank lines with gel coat finish.
- Polyurethane formulated marine sealants used at hull-to-deck, boat deck joints and exterior fittings.
- Marine-grade plywood bulkheads with molded fiberglass hat section stringers.
- Interior finished with handcrafted solid teak and veneers.

## Saloon

The roomy saloon is entered from the large covered aft deck through two welded aluminum weathertight doors complete with retractable screen door. To starboard is a large comfortable U-shaped settee with custom ultra leather cushions and a cherry hi-lo table that can be used either as a coffee table or large dining table seating up to 8 people. This settee also has an insert that allows it to easily convert to a double berth if needed. Forward to port is a bar area complete with customizable drawer storage and enclosed storage for glassware. For entertainment a large Samsung TV with Sonos sound bar rises up in front of the port window for easy viewing from the settee to starboard. Outdoor speakers and a Sonos whole boat sound system enables you to stream music everywhere on the boat and have a party where ever you drop anchor. There are 5 large opening windows with custom shades and valences that keep the room bright and airy. Custom carpeting throughout the boat protects the cherry and ash floors from everyday wear.

## Galley

The galley is forward on the starboard side of the saloon and is open to the saloon but separated by a custom granite counter and backsplash. There is additional access to the galley from the outside covered side deck through a welded aluminum Dutch door to make provisioning a breeze. A cherry and ash floor keep the galley bright and give it a warm feel.

Major components in the galley include:

- Jenn-Air® 22cu ft French door refrigerator w/ drawer freezer and ice maker
- GE® microwave/convection oven
- Blue Star 4 burner stove/oven
- GE® Dishwasher
- Elkay® Stainless steel double basin galley sink with Moen faucet
- Slide out double trash bin for recycling convenience
- Pantry with custom pull out drawers for easy access to storage

## Master Stateroom

The master stateroom is forward to take full advantage of the full width of the yacht. There are 4 large stainless steel opening ports and 2 overhead hatches with Oceanair Skyscreen and shades that make the room feel large, bright and airy. There are multiple large drawers for storage under the queen island berth as well as additional storage accessed via a pneumatic lift for the bed mattress. There is one large hanging locker and one large closet as well as a 7 drawer dresser with custom LED lighting.

## Ensuite Head

The ensuite head is on the aft port side of the master stateroom. There is a stall shower with glass door and molded seat, 2 mirrored medicine cabinets, granite topped vanity with Grohe fixture, household size Dometic porcelain freshwater toilet and linen storage. There are two large opening stainless steel ports above the vanity and in the shower for plenty of light and ventilation.

## Guest Stateroom

The guest stateroom is to starboard and aft of the master. It features two large twin beds with abundant large drawer storage under them. A large hanging locker provides additional storage. There are two oversized opening portholes to provide light and ventilation. A Samsung flat panel TV is mounted on the wall to provide entertainment.

## Guest Ensuite Head

The Guest Head is located forward of the guest stateroom and is an ensuite head. The head features a separate shower stall with glass door and molded seat. There is a stainless steel opening port in the shower stall for natural light and ventilation. The counter for the sink is granite and there is a household sized Dometic head.

## Open Office

The open office is located on the port side forward and down from the galley and saloon. It features a large desk with abundant drawer storage and cabinet storage including two locking file drawers and an oversized storage cabinet.

There are two large stainless steel ports with that keep the area bright and airy and with the LED lights overhead provide just the right amount of light for the desk area. Forward of the office in the hallway behind vented cherry doors are a Bosch stack washer/dryer unit with added ventilation fan.

## Pilothouse and Electronics

The pilothouse is up a few steps from the saloon and galley and is truly the center of activity when underway. A Stidd helm chair keeps the captain comfortable underway. An ultra leather L-shaped settee is behind the helm. With it's mounted folding pedestal table it is the perfect place for a relaxing dinner or even for a second office space. This settee also converts to a double watch berth if needed. Welded aluminum Dutch doors port and starboard allow for easy access to all decks. The pilothouse offers great ventilation via an extra large stainless steel opening port looking aft and 2 opening side windows. Stepping out of the port side pilothouse door leads to either boat deck/flybridge area or to the Portuguese bridge deck. There are ships control stations with custom fiberglass hard covers on both port and starboard sides of the Portuguese bridge making docking in any location easy.

- (2) Furuno TZT19F units (TZ3 Touch) multifunction units (new in 2021)
- Furuno TZT2BB unit, driving Furuno 19" MU195T LCD display (new in 2021)
- Furuno Multifunction for depth
- Furuno 48 mile open array radar
- Furuno Auto Pilot
- Furuno class B AIS
- Furuno DDF1 depth sounder
- Furuno BBWX4 Sirius XM weather/music receiver
- Airmar weather instrument
- Icom IC-M802 SSB
- Icom IC-M506 VHF
- Icom IC-M506 VHF
- PepWave Max Transit combination WiFi/5G receiver/router
- Wilson cell phone repeater w/ external antenna
- Glomar omnidirectional TV amplifier & amplifier
- Hydraulic Bow Thruster
- Hydraulic Stern Thruster
- ABT Trac Stabilizers
- ACR RCL100 LED spotlight with controls in Pilothouse and bridge
- High water alarm
- Kahlenberg Air Horns
- Maxwell windlass controller with digital counter
- Remote panel for SeaFire extinguisher
- Exalto intermittent wipers with washers
- Grey & black waste water tank tenders
- Ritchie compass
- Rudder angle indicator
- Overhead hatches with OceanAir shades



## Fly Bridge

The fly bridge is designed for optimum enjoyment in any weather. Equipped with a custom removable hard top it is the ultimate entertaining space for great views and ocean breezes. Complete with dual new Pompanette helm chairs a fiberglass cocktail table and a settee with custom Sunbrella cushions, both captain and guests have a comfortable area to sit. Behind the helm area on the flybridge is the summer kitchen equipped with a SeaStar propane BBQ, Isotherm refrigerator/freezer, freshwater spigot and stainless sink & storage space.

- Furuno TZ Touch 15" screen
- Furuno multifunction depth
- Furuno auto pilot
- Ritchie Power Damp Plus
- Icom IC-M506 VHF
- Remote panel for ABT stabilizers
- Bow and stern thruster controls
- Maxwell windlass control with chain counter
- High water alarm
- Remote panel for SeaFire extinguisher
- Custom removable hard top for doing the Great Loop (finished Great Loop without needing removal)
- Rudder angle indicator
- Custom awning system for boat deck
- Propane locker with dual 20# aluminum tanks
- Poly-Planar speakers

## Engine Room and Machinery

Wanting to travel in comfort the owners of this vessel opt'd for two gensets and 5 air conditioning systems. The bigger genset can handle all 5 AC systems running while leisurely traveling long anywhere on a hot summer day. For night time comfort running the smaller genset will help fuel economy while keeping up to 3 AC systems running. Maintenance is a breeze in this walk about engine room. With both engines and gensets interconnected to a Reverso Oil Management system, changing the oil is as simple as opening a valve and pumping the old oil out and new oil in. Air filters and oil filters are easily reached for replacement AND the engine room features a custom workbench making for a great place to open/rebuild any other component that needs to be worked on.

- Remote John Deere gages
- Twin Tier III John Deere 4045TFM85 125 hp with ZF Marine 2.917:1 ratio gear (1925 hours)
- Northern Lights® 12KW generator with sound shield (448 hours)
- Northern Lights® 6KW generator with sound shield (383 hours)
- Northern Lights® generator water exhaust separator
- ABT Hydraulic stabilizers
- ABT® 25hp hydraulic bow thruster- controls at all 4 stations
- ABT® 15hp hydraulic stern thruster-controls at all 4 stations
- ESI® Fuel polishing system
- Reverso® oil change system plumbed to both engines, transmissions and generators
- Walker Airsep air filters on engines
- Sea Fire® automatic fire suppression system
- Dual Racor® 900 fuel filters w/ vacuum gauges for main engines and generator
- Cablemaster
- Workbench with custom folding stool
- Dual Balmar Hi-Output alternators (190 and 60 amp) with external smart regulators
- Manship engine room moisture eliminators with biaxial variable hi-speed fans
- ZF Mathers Cruise Command (4-station) engine controls
- Teleflex hydraulic steering (2 stations)
- Raritan 20 gallon water heater
- Dual Johnson variable speed 24V DC fresh water pumps w/ 5 gallon accumulator tank
- (2) Jabsco dockside pressure regulators
- (5) Rule bilge pumps @3,700 gallons per hour with Ultra high water alarm (2 station)
- Emergency bilge pump tied into raw water intake on main engine
- Centek fiberglass muffler
- Engine room intake and exhaust fans with moisture eliminators
- (4) aluminum fuel tanks with sight gauges for 1,400 gallon total capacity
- Fiberglass 140 gallon tank w/ macerator (black water)
- Fiberglass 140 gallon tank w/macerator (grey water)
- Fireboy Xintex CO detectors
- (2) 316L Stainless steel water tanks for 400 gallon total capacity
- AXIX camera



## Electrical

- Northern Lights® 12KW generator with sound shield (448 hours)
- Northern Lights® 6KW generator (383 hours)
- Glendenning shore power retrieval system
- Smart Plug system
- Magnum Energy 4000 watt inverter/charger
- 240 volt Charles Isolation Boost Transformer
- Charles 60 amp battery charger
- Batteries New 3/2021: FullRiver AGM 92 (8) 6-volt 400Ah wired in series for 24V DC house bank
- 12-volt wired in series for 24V DC engine starting, (2) 12-volt wired in series for 24V DC generator starting,

## Additional Components

- Glendenning shore power retrieval system
- i2 Systems LED lighting throughout
- All exterior lighting is LED
- 3 - Collision Bulkheads
- Manship Engine Room Moisture Eliminators with biaxial variable hi-speed fansStorm Plate Receptacles - hardware only
- CruiseAir reverse cycle AC/Heat units - remote mounted compressors equipped with their SMXHT control panels throughout
- Maxwell Horizontal hydraulic windlass w/ dual wildcats and a gypsy
- Tides drip-less shaft seals
- Steelhead ES1000 electric hydraulic davit system
- Maxwell anchor remote control station with chain counter at pilothouse and flybridge
- Fortress FX-35 with 50' 3/8 chain and 300' line
- X-180 99 lb Ultra Spade with 300' 3/8 chain
- Freeman watertight deck hatch color matched to deck gelcoat for anchor locker
- Bow shore power inlets with Smart Plug
- Custom canvas covers for windows, flybridge, cockpit and tender
- LED Flybridge and Boat Deck Lighting
- Custom Kadey-Krogen design Type 4 mooring chocks
- Many custom stainless handrails
- Spurs line cutters on both shafts
- Trident propane locker with (2) 20lb aluminum propane tanks
- Custom Auto fill valve for water tanks (as simple as pushing a button which starts the fill process and then automatically stops once the tanks are full)
- Fresh and Saltwater wash downs
- Headhunter Mach 5 FW pump- existing duplex Johnson variable speed pump now installed as spare
- New Custom Sunbrella exterior seating cushions in 2021
- New carpet throughout entire boat in 2021
- Cockpit shower
- (2) Pompanette flybridge helm chairs
- SONOS sound system
- Poly-Planar speakers in front of pilot house
- Custom Awning for boat deck
- (3) Stern staples
- Retractable dive ladder under swim platform
- Under water lights

## **Exclusions**

Dinghy, Ekornes chair and owner's personal effects and artwork.

## **Disclaimer**

The Company offers the details of this vessel in good faith but cannot guarantee or warrant the accuracy of this information nor warrant the condition of the vessel. A buyer should instruct his agents, or his surveyors, to investigate such details as the buyer desires validated. This vessel is offered subject to prior sale, price change, or withdrawal without notice.





































